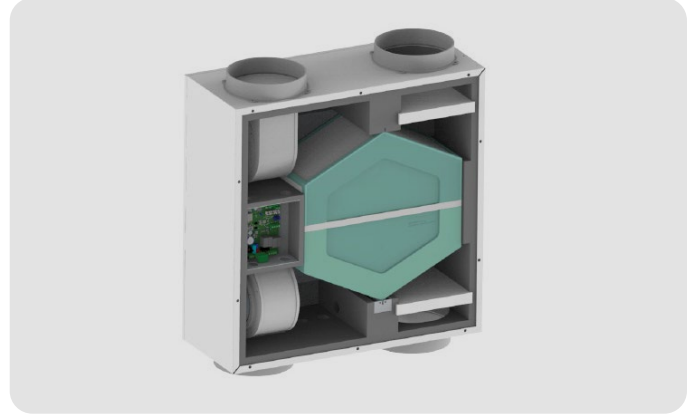


fitt agix cross 150 recovery unit

RECOVERY UNIT 150 M3/H
E.G. HORIZONTAL INSTALLATION

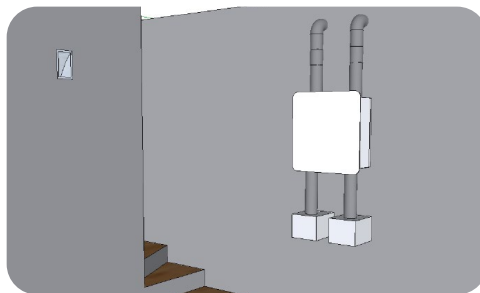
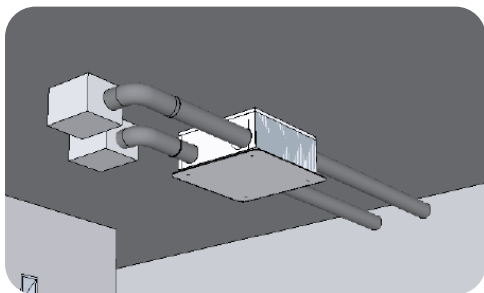


RECOVERY UNIT 150 M3/H
E.G. VERTICAL INSTALLATION



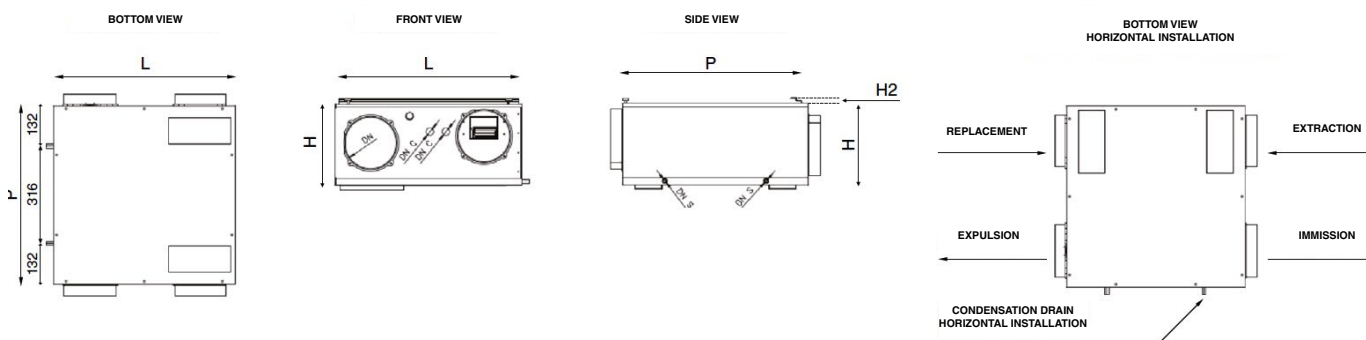
TECHNICAL SPECIFICATIONS

Code	VMAG-150PS	
Fans		
Type of fan	-	centrifugal with forward blades - directly coupled electronic brushless motor
Number of Fans	N.	2
Air flow rate	m ³ /h	140
Useful pressure	Pa	100
Heat exchanger (UNI EN 13141-7, int. temp. 20°C, int. humidity 28%, ext. temp. 7°C, ext. humidity 72%)		
Type of exchanger	-	polypropylene material counter-current plates
Number of exchangers	N.	1
Recovery efficiency	%	85,2
Filters		
Type of filter	-	flat filters
Filtration class	-	ePM1 80%
Acoustic data (UNI EN 3741 and UNI EN 3744)		
Lw sound power transmitted by the structure	dB(A)	49
Radiated Lw sound power in the channel	dB(A)	54
Average Lp sound pressure at 1m	dB(A)	42,1
Average Lp sound pressure at 3m	dB(A)	34,7
Electrical data		
Supply voltage	V	230 / 1 / 50 Hz
Current consumption	A	0,8
Power consumption	W	95
Protection degree	IP	IPX0



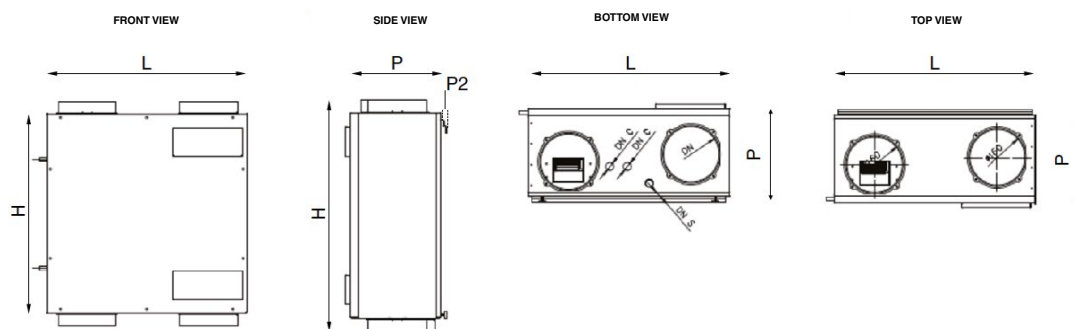
Suitable for both horizontal and vertical installation

HORIZONTAL CEILING INSTALLATION DIMENSIONS



Width L	mm	580
Depth P	mm	580
Height H	mm	255
Bracket height H2	mm	16
Air diameter DN	Ø	160
Condensate drain diameter DN S	mm	12
Cable diameter DN S	mm	16
Weight	Kg	19

HORIZONTAL WALL INSTALLATION DIMENSIONS



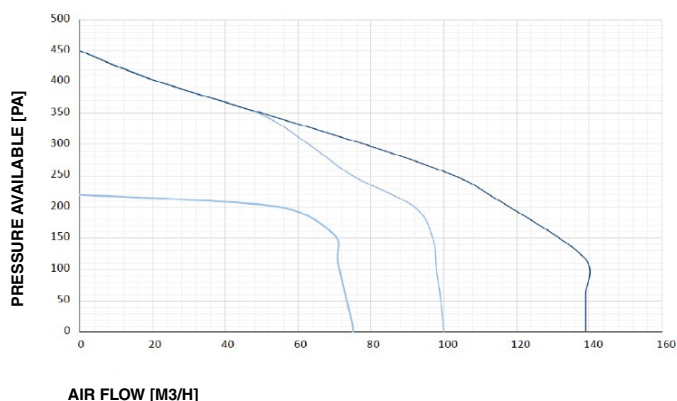
Width L	mm	580
Depth P	mm	255
Height H	mm	580
Bracket depth P2	mm	16
Air diameter DN	Ø	160
Condensate drain diameter DN S	mm	20
Cable diameter DN S	mm	16
Weight	Kg	19

CONTROL (INCLUDED)

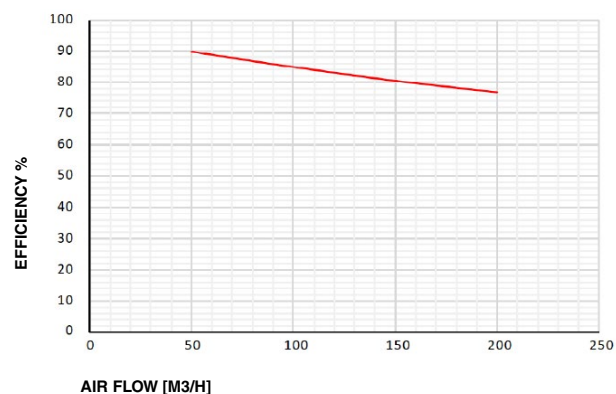
Remotable panel for mounting on 502-503 box or the wall.
Speed, temperature and operating mode control.
Maximum connection length 50m if using a 4-wire twisted shielded cable.
Wi-Fi control for management using a smartphone or tablet and dedicated APP.



AEREAULIC PERFORMANCES



THERMAL EFFICIENCY



CURVES REFERRED TO THE FOLLOWING CONDITIONS (UNI EN 13141-7):
OUTDOOR AIR 7 ° - 70% U.R. - INDOOR AIR 20 ° - 28% U.R.