

-DFC series multidirectional air diffusers

-DFC SERIES MULTIDIRECTIONAL AIR DIFFUSERS



FEATURES

Diffuser, which can be used for both air intake and extraction in indoor environments, especially on ceiling. It consists of a flat white screen, spaced from the frame so as to spread air tangentially to the four sides, and a frame that also acts as a support for the screen. The screen pulls out and inserts very easily for cleaning.

Fixing methods

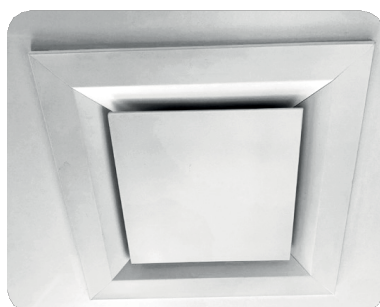
- Steel clips (springs) for quick-release attachment of the screen to the frame. In addition, the frame has 2 nylon thread safety cables to be attached (by the customer) to two of the eight screen spring-fixing screws by unscrewing the nuts, inserting the eyelets under the washers, and screwing them back on.
- Mounting of the frame on the PAL plenum, if any, is quick-fit (see also the PAL plenum data sheet).

Construction materials

- Aluminum thickness. 1.5 mm for the screen.
- PVC color white RAL 9010 for the frame.
- Forex thick 6 mm for the insulation board on the non-visible face of the screen.
- Steel for clips (springs).

Screen color

White RAL 9010, with epoxy powder coating.



ACCESSORIES

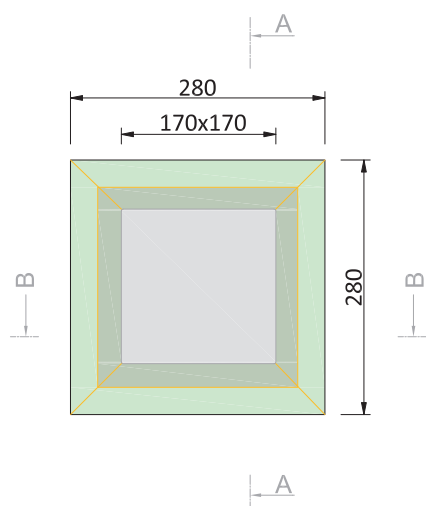
- Contrast calibration damper (PVC frame and bayblend fins) -S/02 series.
 - Plenum in polyisocyanurate -PAL/02 series.
-

DIMENSIONS

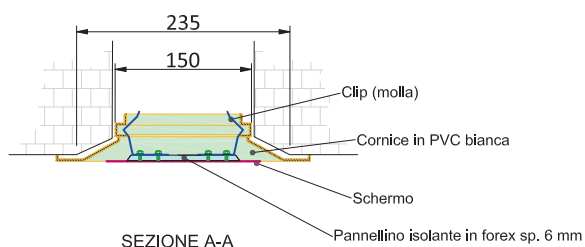
Diffusore multidirezionale DFC 150x150

Codice -DFC/150X150B

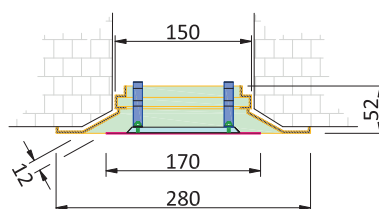
Con schermo in alluminio spess. 1,5 mm bianco RAL9010.



VISTA FRONTALE



SEZIONE A-A

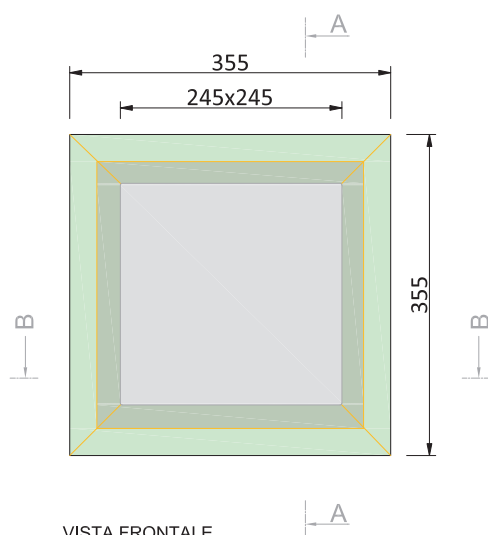


SEZIONE B-B

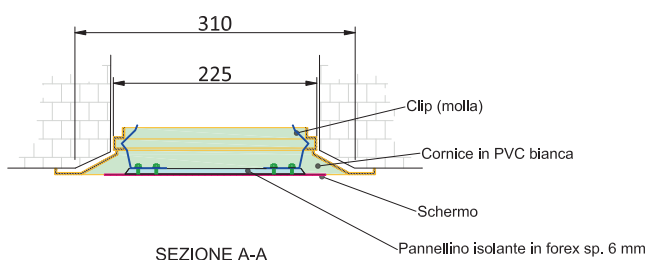
Diffusore multidirezionale DFC 225x225

Codice -DFC/225X225B

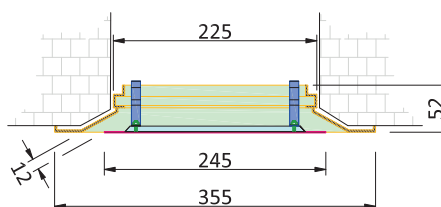
Con schermo in alluminio spess. 1,5 mm bianco RAL9010.



VISTA FRONTALE



SEZIONE A-A



SEZIONE B-B

TABLE WITH DIFFUSER DIMENSIONS

Code	Distance ceiling-screen	Plenum neck size [mm]	External diffuser size [mm]	Size of the hole to do on the false ceiling [mm]
-DFC/150X150B	fixed	150x150	280x280	235x235
-DFC/225X225B	fixed	225x225	355x355	310x310
-DFC/300X300B	fixed	300x300	430x430	385x385
-DFC/375X375B	fixed	375x375	505x505	460x460
-DFC/450X450B	fixed		580x580	ask our technical office
-DFC/375X150B			505x280	
-DFC/450X225B			580x355	

QUICK SELECTION TABLE

Code	Air passage area on diffuser contour [m ²]	Flow rate (m ³ /h) with v = 2.5 m/s Pressure drop: 2 Pa	Flow rate (m ³ /h) with v = 3 m/s Pressure drop: 3 Pa	Flow rate (m ³ /h) with v = 4 m/s Pressure drop: 5 Pa	Flow rate (m ³ /h) with v = 5 m/s Pressure drop: 8 Pa	Flow rate (m ³ /h) with v = 6 m/s Pressure drop: 12 Pa
-DFC/150X150B	0.0082	73	88	117	147	176
-DFC/225X225B	0.0116	104	125	167	208	250
-DFC/300X300B	0.0154	138	166	221	277	277
-DFC/375X375B	0.0190	171	205	273	342	410
-DFC/450X450B						
-DFC/375X150B				ask our technical office		
-DFC/450X225B						