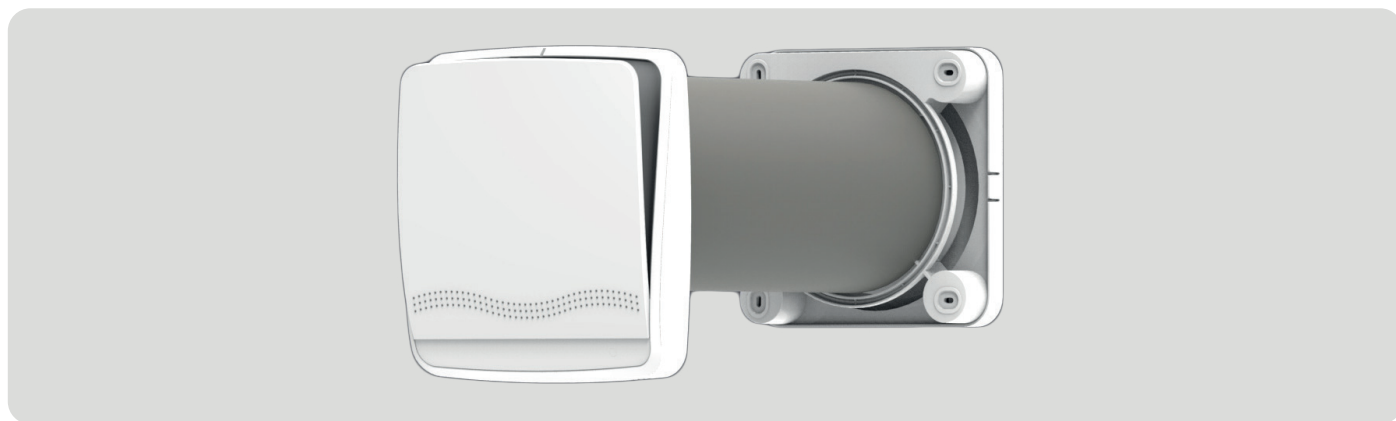


FLAT 60 decentralised recovery units

DECENTRALISED RECOVERY UNITS "FLAT 60" series



FEATURES

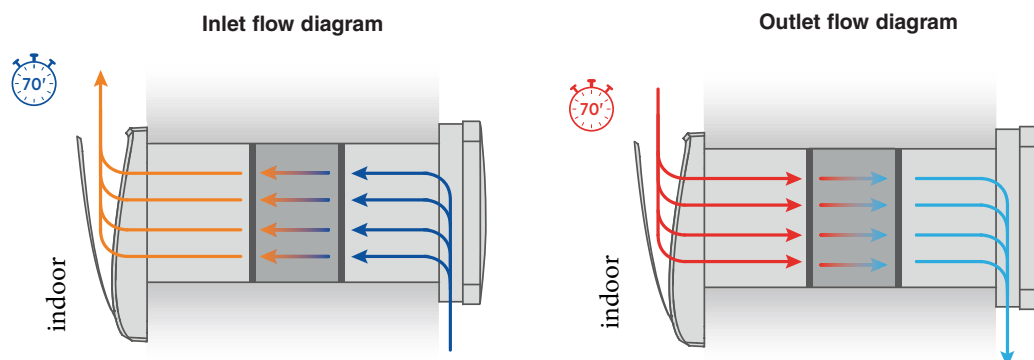
- Elegant design from both the inside (4 cm depth only) and the outside part;
- Ceramic heat exchanger Length=15 cm;
- Fan positioned after the exchanger for a quiet operation, with alternating flows of 70 sec.;
- External grille designed to reduce noise from outside;
- Beep signal and LED for signaling command acquisition;
- Master-Slave programming simplified by dip-switches;
- Ease of assembly and maintenance;
- Inner cover included.

MODELS

Code	Description
VMA60-FLAT-B1	FLAT 60 BASIC PRO - Basic Remote Control
VMA60-FLAT-D	FLAT 60 DUO - night + 3 speeds MULTIFUNCTION REMOTE CONTROL - Master/Slave by cable
VMA60-FLAT-W	FLAT 60 WIRELESS - night + 3 speeds MULTIFUNCTION REMOTE CONTROL - Wireless Master/Slave
VMA60-FLAT-APP	FLAT 60 APP with smartphone application

DELOCALIZED WALL HEAT RECOVERY UNIT

Delocalized HRV unit designed for a simple and effective solution for heat recovery ventilation for individual rooms without ductwork.



TECHNICAL SPECIFICATIONS

	FLAT 60 BASIC PRO	FLAT 60 DUO	FLAT 60 WIRELESS	FLAT 60 APP
Ventilation capacity [m³/h]	60	60	60	60
PVC tube (included)	Ø [mm]	160	160	160
	length [mm]	500 (can be cut to 250 mm on construction site)		
Exchanger type	Ceramic	Ceramic	Ceramic	Ceramic
Operation	Alternating streams of 70 sec.	Alternating streams of 70 sec.	Alternating streams of 70 sec.	Alternating streams of 70 sec.
Master-Slave Connection	No	Cable	Wireless	App
Command	Basic remote control	Remote control with multifunctional display		Smartphone
Night function and timed boost function for air extraction	-	✓	✓	✓
Visual function indicator and filter cleaning	-	✓	✓	✓
Built-in twilight and hygrostat with 40%, 60%, 90% thresholds	-	✓	✓	✓
Speed levels	3	4: night + 3 speeds	4: night + 3 speeds	4: night + 3 speeds
Indoor unit A (height) x W (width) x D (depth) [mm].	250x230x40	250x230x40	250x230x40	250x230x40
Noise at min/max speed at 3 m [dB].	9/30	9/30	9/30	9/30
Power consumption at maximum speed [W]	6,7	6,7	6,7	6,7
Weight [kg]	4,3	4,3	4,3	4,3
Filter classification	G3	G3	G3	G3
Degree of protection	IPX4	IPX4	IPX4	IPX4

ACCESSORIES

Code	Description	Suitable for
VMA60TI500	Preparation tube Ø160 L=500 mm (for installation before order unit)	FITT AGIX FLAT 60 and PANEL60
VMA60TI700	Preparation tube Ø160 L=700 mm (for installation before order unit)	FITT AGIX FLAT 60 and PANEL60
VMA60-FLATPRE	Polystyrene template (light blue color)	FITT AGIX FLAT 60 and PANEL60
VMA60-FLATSIL	Silencer for tube Ø160 made of PET-coated polyester fiber.	FITT AGIX FLAT 60 and PANEL60
VMKSA60-FLAT2	Kit for installation on jamb (measures of vertical grille: 250x75 mm)	FITT AGIX FLAT 60 and PANEL60
VMA60FILTERS	Kit of No. 4 honeycomb filters	FITT AGIX FLAT 60 and PANEL60
VMGRESIR160	Foldable outdoor grille; quick installation from indoor	FITT AGIX FLAT 60 and PANEL60
VMGAIR160A60	External RAL9010 sheet metal steel grille with Ø160 collar	FITT AGIX FLAT 60 and PANEL60
VMA60-FLATPRO5	5 cm wall extension for outdoor grill	FITT AGIX FLAT 60
VMA60-FLAT-PRO1	10 cm wall extension for outdoor grill	FITT AGIX FLAT 60
VMA36-FLAT-DP	MASTER Remote Panel	FITT AGIX FLAT 30/60 - DUO
VMA36-FLAT-DPCO	MASTER remote panel + CO ₂ sensor	FITT AGIX FLAT 30/60 - DUO
VMA36-FLAT-WP	MASTER Remote Panel	FITT AGIX FLAT-WIRELESS / PANEL-WIRELESS
VMA36-FLAT-WPCO	MASTER remote panel + CO ₂ sensor	FITT AGIX FLAT-WIRELESS / PANEL-WIRELESS



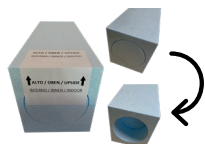
BASIC REMOTE CONTROL FOR THE BASIC PRO MODEL (included in it)

- ON/OFF: power on/off;
- V+: speed selection;
- V-: speed selection.



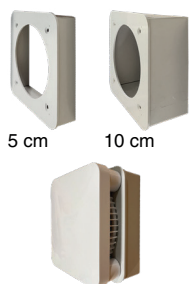
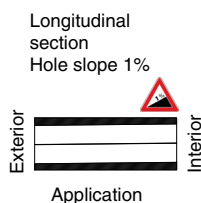
MULTIFUNCTION REMOTE CONTROL FOR DUO AND WIRELESS MODELS (included in delivery)

Night function (10 m³/h) and 3 speed levels (20, 40, 60 m³/h); 3 humidity levels: 40%, 60%, 90%; Boost extraction function (timed for 20 min); large display; touch buttons.



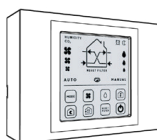
POLYSTYRENE TEMPLATE

Template, made of sintered expanded polystyrene, for installation within the masonry for subsequent insertion of piping for the heat recovery unit. Leaving the cylindrical part on the inside, the arrangement should be inserted perfectly "in bubble" inside the masonry, taking care to place the side marked as "inside" toward the interior of the room, so as to have the other side toward the outside that allows condensation to drain outside due to the effect of the slope.



EXTERNAL GRILLE PVC EXTENSIONS

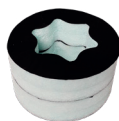
Extensions in RAL7035 color (paintable by the customer) for support of the external grille, which can be used if the wall thickness is less than 25 cm (minimums required for the installation of the heat recovery unit), available in depths of 5 cm and 10 cm. A set of screws and plugs for attaching the extension to the wall (and also the outdoor grille to the extension) is supplied.



MASTER REMOTE PANEL (optional) FOR DUO AND WIRELESS MODELS

Available in the following versions:

- Panel for DUO unit
- Panel+CO2 for DUO unit
- Panel for WIRELESS unit
- Panel+CO2 for WIRELESS unit



SILENCER

Silencer for installation inside the Ø160 recuperator tube, made of polyester fiber certified for nonproliferating air duct bacteria, coated at both ends with polyethylene foam film. It is to be inserted by hand (under low pressure) inside the tube of FITT AGIX FLAT 60 or PANEL 60 near the outdoor grille; so there is non need of adhesives.

In tests performed on a 60-cm-long bare tube, with the indoor noise base of about 32 dB(A), artificially created outdoor noise of about 60 dB(A), a noise abatement of about 9 dB(A) was found.



KIT FOR INSTALLATION ON JAMB

Solution designed for corner installation on jamb. It avoids the presence in the facade of an outdoor grille, that in some cases could greatly limit the aesthetic rendering. It provides to access to vertical outdoor grille (in RAL9010 plate sheet metal steel), even without the presence of the terrace.

