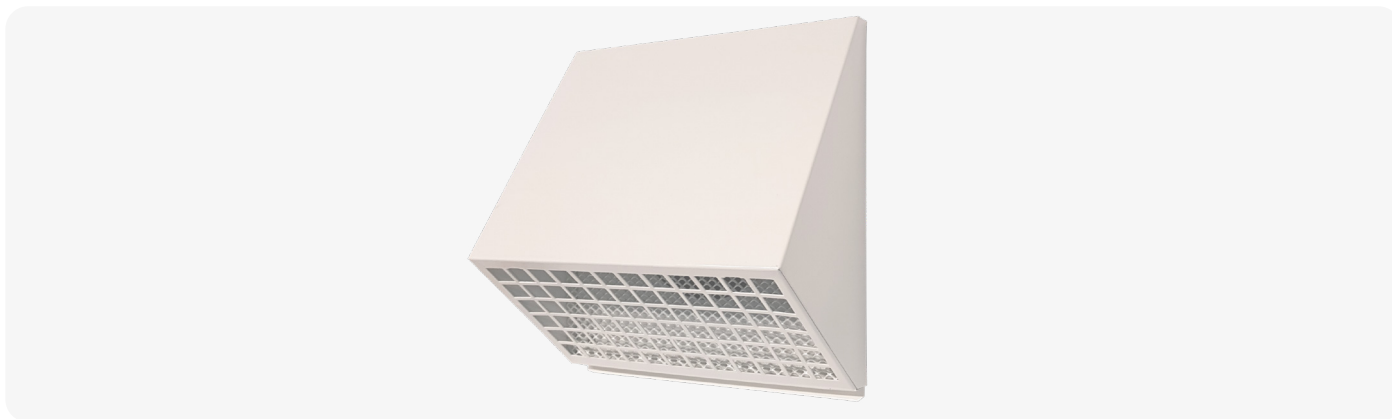


vmgair16 series outdoor grilles

VMGAIR16 SERIES OUTDOOR GRILLES



INSTALLATION INSTRUCTIONS

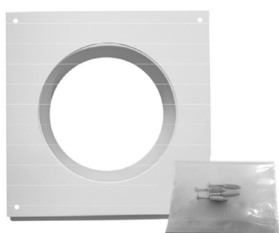


FIG. 1

Install the grid support base on the exterior wall by securing it at 4 points using the supplied wall plugs and screws.



FIG. 2

Position the grid on top of the support base, aligning the quick-fit joints. Then, push the lower part of the grid against the base to lock it into its final position.



FIG. 3

For maintenance operations, use the plastic release tool or a similar non-abrasive tool (to avoid damaging the grid's paint finish) and gently pry the grid as shown in FIG. 3.