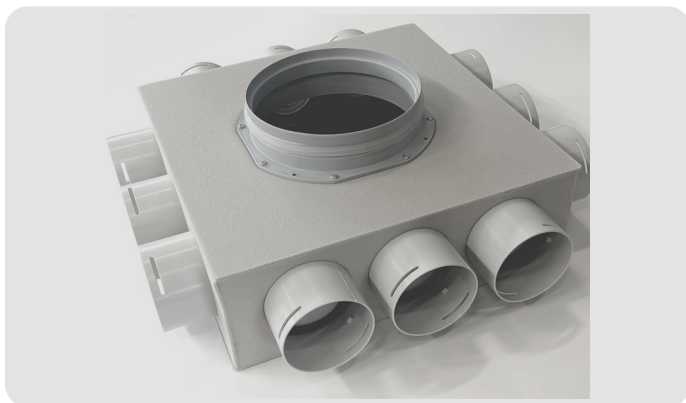


# "SLIM MEDIUM" DISTRIBUTION BOXES

## VMBSM series

### "SLIM MEDIUM" DISTRIBUTION BOXES VMBSM series



Upper side of the box



Bottom side of the box

### FEATURES

Boxes for distribution of HRV fresh air to habitable rooms or for the extraction of HRV exhausted one from the wet rooms. The main collar have a main diam. Ø125 or Ø160 to be connected to the ventilation unit by a rigid or a flexible duct. They are equipped with 12 couplings ("Grey collars") to Ø75 or Ø90 round semi-rigid pipes, depending on the model, for distribution to the various rooms.

#### Material of construction:

PVC anti-condensation thick. 4 mm.

Ø75 or Ø90 connections are made with threaded PP "GREY" collars.

The main connection (unit side) is with PVC collar with gasket fixed with screws.

#### Exterior coating or int.:

partial inner insulation of polyester fiber coated with waterproof and dustproof film is provided. Externally, the box is lined with 3 mm thick closed-cell PE foam.

#### Fixing methods:

Fixable to the floor, wall or ceiling.

#### Operating temperature:

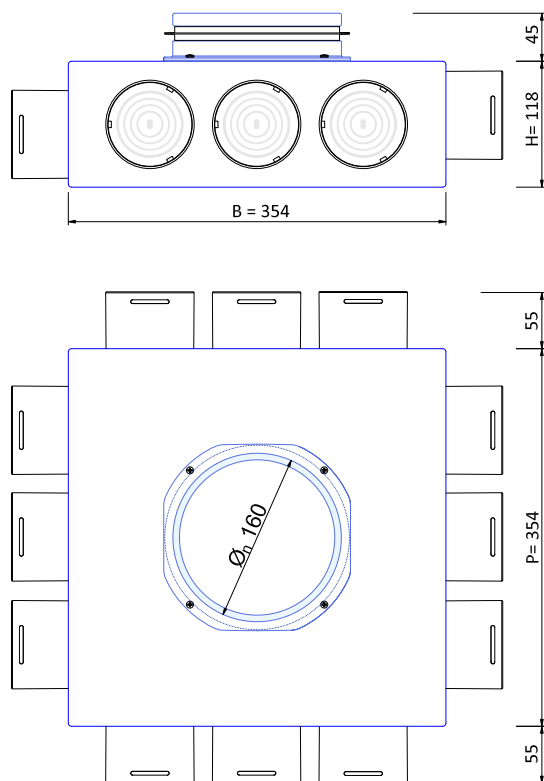
-50 ÷ 60°C.

### TECHNICAL SPECIFICATIONS

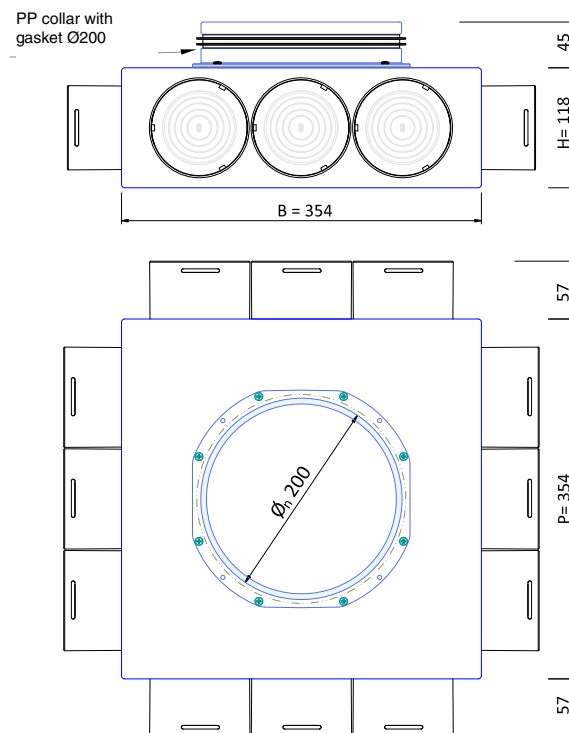
Code	No. OF ATTACHMENTS ON UNIT SIDE OF VENTILATION	Unit side connection diameter	No. of distribution collars	Ext. diameter of semi-rigid pipe for the distribution	Type of distribution collars	Max flow rate of the box (m³/h)
VMBSM161275	1	Ø160	12	Ø 75	Ø75 GREY	400
VMBSM161290	1	Ø160	12	Ø 90	Ø90 GREY	450
VMBSM181275	1	Ø180	12	Ø 75	Ø75 GREY	400
VMBSM181290	1	Ø180	12	Ø 90	Ø90 GREY	450
VMBSM201275	1	Ø200	12	Ø 75	Ø75 GREY	400
VMBSM201290	1	Ø200	12	Ø 90	Ø90 GREY	450

## DIMENSIONS

**Box dimensional drawing with mai collar Ø160**  
(The GREY collars in the drawing are diam. Ø75)



**Box dimensional drawing with main collar Ø200**  
(The GREY collars in the drawing are diam. Ø90)



## GRAPH

