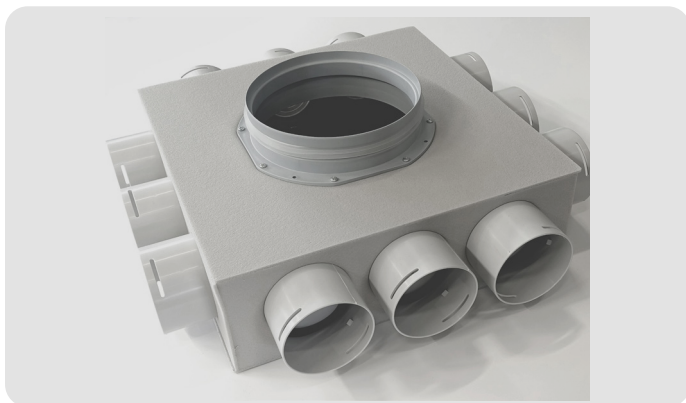


# slim medium distribution box

## vmbsm series

### SLIM MEDIUM DISTRIBUTION BOX VMBSM SERIES



Upper side of the box



Bottom side of the box

### FEATURES

box for distribution of 'fresh air to habitable rooms or for extraction of exhausted air from humid rooms.

The boxes have a main connection of any diameter to be connected to the ventilation unit via a rigid or flexible duct (possibly with the interposition of a silencer, not supplied but still recommended). They are equipped with 12 connections to Ø75 or Ø90 round semi-rigid pipes, depending on the model, for distribution to the various rooms.

#### Material of construction:

PVC anti-condensation thick. 4 mm. Ø75 or Ø90 connections are made with threaded PP "GREY" collars. The main connection (unit side) is with PVC collar with gasket fixed with screws.

#### Exterior coating or int.:

partial inner insulation of polyester fiber coated with waterproof and dustproof film is provided. Externally, the box is lined with 3 mm thick closed-cell PE foam.

#### Fixing methods:

Fixable to the floor, wall or ceiling.

#### Operating temperature:

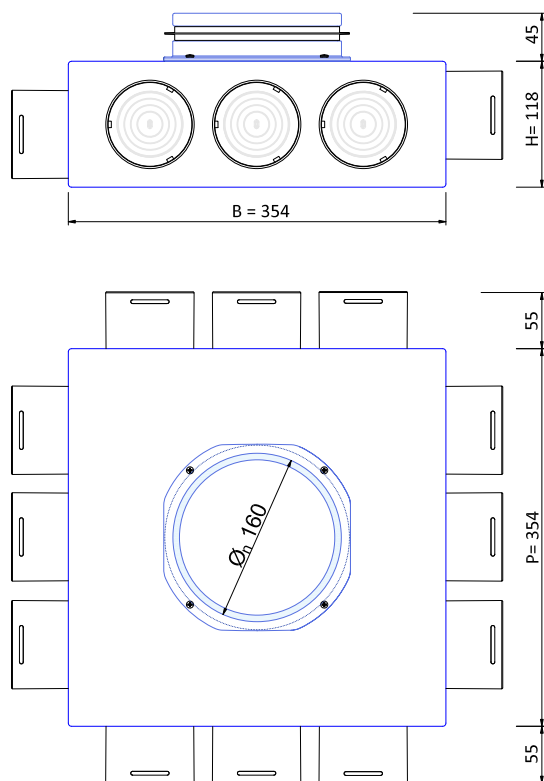
-50 ÷ 60°C.

### QUICK SLEEVING TABLE

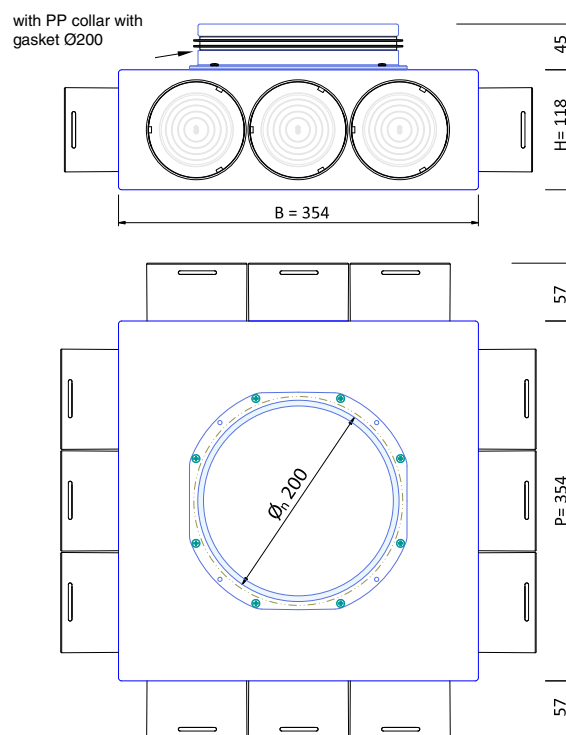
Code	N. ventilation unit side	Fan unit side connection diameter	N. SERIAL distribution collars	Ext. diameter. semi-rigid tube on the distribution	Type of distribution collar	Max flow rate of the box (m³/h)
VMBSM161275	1	Ø160	12	Ø 75	Ø75 GREY	400
VMBSM161290	1	Ø160	12	Ø 90	Ø90 GREY	450
VMBSM181275	1	Ø180	12	Ø 75	Ø75 GREY	400
VMBSM181290	1	Ø180	12	Ø 90	Ø90 GREY	450
VMBSM201275	1	Ø200	12	Ø 75	Ø75 GREY	400
VMBSM201290	1	Ø200	12	Ø 90	Ø90 GREY	450

## DIMENSIONS

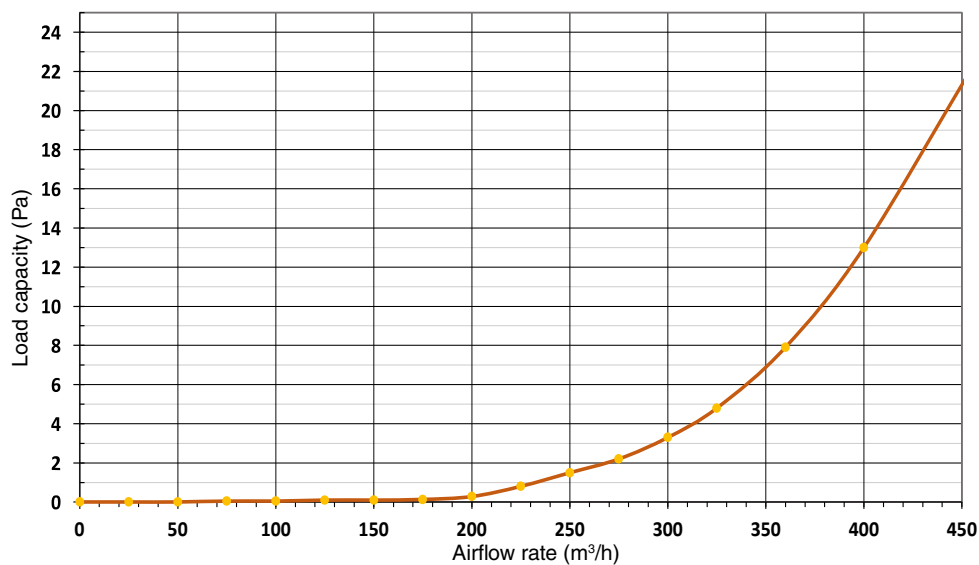
**Box dimensional drawing with princ attack. Ø160**  
(The GREY collars in the drawing are diam. Ø75)



**Box dimensional drawing with princ attack. Ø200**  
(The GREY collars in the drawing are diam. Ø90)



## GRAPH OF AIR FLOW RATE - PRESSURE DROP DP OF SLIM MEDIUM BOXES



REV 03/2025