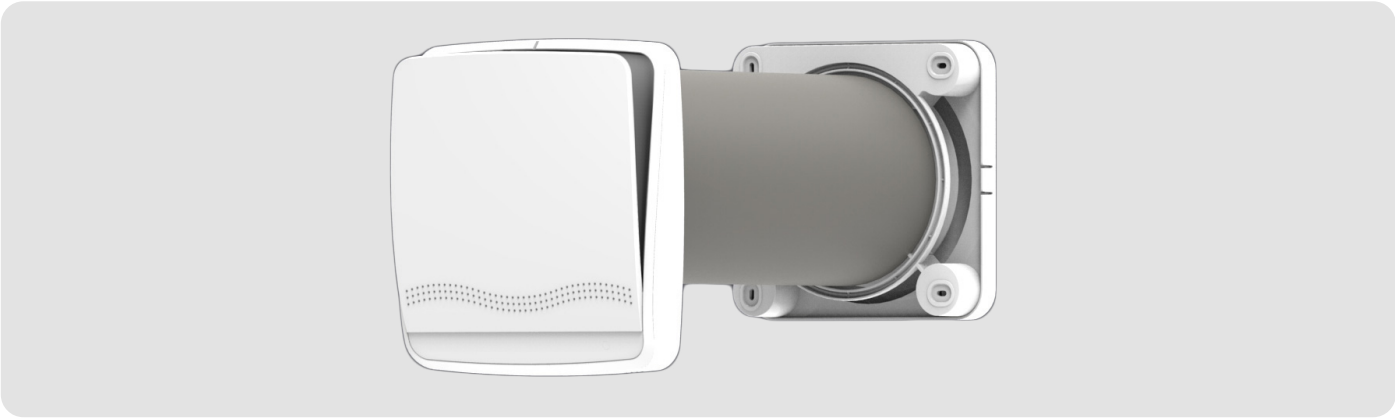


fitt agix flat 60 decentralised recovery unit

FITT AGIX FLAT 60 DECENTRALISED RECOVERY UNIT



FITT AGIX FLAT 60 FEATURES

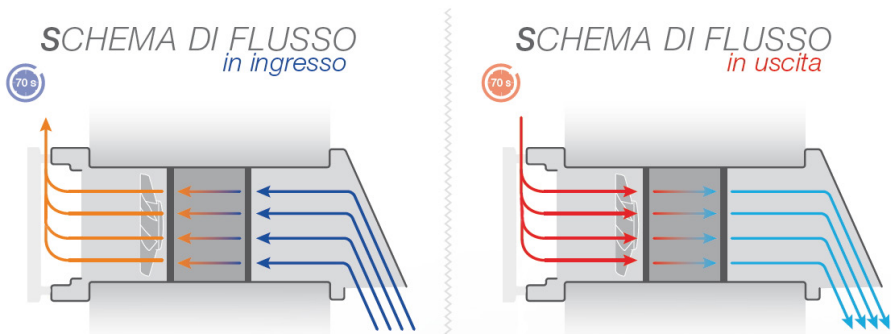
- Elegant design from both the inside (depth of only 4 cm) and outside;
- Ceramic heat exchanger L=15 cm;
- Fan positioned after the exchanger for quiet operation with alternating flows of 70 sec;
- External grille designed to reduce noise from outside;
- Beep signal and LED for signaling command acquisition;
- Master-Slave programming simplified by dip-switches;
- Ease of assembly and maintenance;
- Inner cover included

FITT AGIX FLAT 60

Code	Description
VMA60-FLAT-B1	FITT AGIX FLAT 60 BASIC PRO - Basic Remote Control
VMA60-FLAT-D	FITT AGIX FLAT 60 DUO - night + 3 speeds MULTIFUNCTION REMOTE CONTROL- Master/Slave via cable
VMA60-FLAT-W	FITT AGIX FLAT 60 WIRELESS - night + 3 speeds MULTIFUNCTION REMOTE CONTROL - Wireless Master/Slave
VMA60-FLAT-APP	FITT AGIX FLAT 60 APP with smartphone application

DELOCALIZED WALL HEAT RECOVERY UNIT

Delocalized HRV unit designed for a simple and effective solution for heat recovery ventilation for individual rooms without ductwork.



TECHNICAL SPECIFICATIONS

	FITT AGIX FLAT 60 BASIC PRO	FITT AGIX FLAT 60 DUO	FITT AGIX FLAT 60 WIRELESS	FITT AGIX FLAT 60 APP
Ventilation capacity [m³/h]	60	60	60	60
PVC pipeline Ø [mm]	160	160	160	160
(included) length [mm]	500 (can be cut to 250 mm)			
Exchanger type	Ceramic	Ceramic	Ceramic	Ceramic
Operation	Alternating streams of 70 sec.	Alternating streams of 70 sec.	Alternating streams of 70 sec.	Alternating streams of 70 sec.
Master-Slave Connection	No	Cable	Wireless	App
Command	Basic remote control	Remote control with multifunctional display		Smartphone
Night function and timed boost function for air extraction	-	✓	✓	✓
On/off switch on board unit	✓	✓	✓	✓
Visual function indicator and filter cleaning	-	✓	✓	✓
Built-in twilight and hygrostat with 40%, 60%, 90% thresholds	-	✓	✓	✓
Speed levels	2: min and max	4: night + 3 speeds	4: night + 3 speeds	4: night + 3 speeds
Indoor unit A (height) x W (width) x D (depth) [mm].	250x230x40	250x230x40	250x230x40	250x230x40
Noise at min/max speed at 3 m [dB].	9/30	9/30	9/30	9/30
Power consumption at maximum speed [W]	6,7	6,7	6,7	6,7
Weight [kg]	4,3	4,3	4,3	4,3
Filter classification	G3	G3	G3	G3
Degree of protection	IPX4	IPX4	IPX4	IPX4



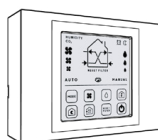
basic remote control for the BASIC PRO model

- ON/OFF: power on/off;
- V+: speed selection;
- V-: speed selection.



MULTIFUNCTION REMOTE CONTROL for DUO and WIRELESS models (included in delivery)

Night function (10 m³/h) and 3 speed levels (20, 40, 60 m³/h); 3 humidity levels: 40%, 60%, 90%; Boost extraction function (timed for 20 min); large display; touch buttons.



MASTER REMOTE PANEL (optional) for DUO and WIRELESS MODELS.

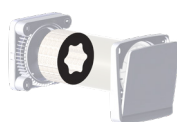
Available in the following versions:

- Panel for DUO UNIT
- Panel+CO₂ for DUO UNIT
- Panel for WIRELESS UNIT
- Panel+CO₂ for WIRELESS UNIT

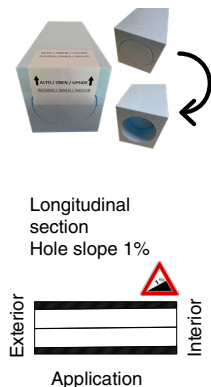


SILENCER

Silencer for installation inside the recuperator pipe, made of polyester fiber certified for nonproliferating air duct bacteria coated at both ends with polyethylene foam film. It is to be inserted by hand under pressure inside the pipeline of FITT AGIX FLAT 60 near the outer grid without the need for the use of adhesives. In tests performed on a 60-cm-long bare pipe, with the indoor noise base of about 32 dB(A), artificially created outdoor noise of about 60 dB(A), a noise abatement of about 9 dB(A) was found.

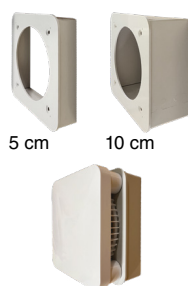
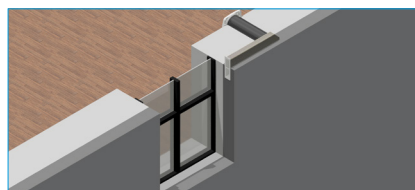


POLYSTYRENE PREDICING Provision of template, made of sintered expanded polystyrene, within the masonry for subsequent installation of piping for the heat recovery unit. Leaving the cylindrical part on the inside, the arrangement should be inserted perfectly "in bubble" inside the masonry, taking care to place the side marked as "inside" toward the interior of the room, so as to have the other side toward the outside that allows condensation to drain outside due to the effect of the slope.



LOWERED JAMB KIT

Solution designed for corner installation on jamb. Avoids the presence in the facade of the grill greatly limiting the aesthetic impact, decreases the noise from outside, provides the possibility of access to the outdoor grill even without the presence of the terrace.



EXTERNAL GRID EXTENSIONS PVC extensions in RAL7035 color (painted by the customer) for support of the external grille, which can be used if the wall thickness is less than 25 cm (minimums required for the installation of the heat recovery unit), available in depths of 5 cm and 10 cm. A set for attaching the extension to the wall and the outer grill of the recuperator to the extension is supplied with each extension.

ACCESSORIES

Code	Description	Suitable for
VMA60TI500	Preparation tube Ø160 L=500 mm	FITT AGIX FLAT 60 and PANEL60
VMA60TI700	Preparation pipe Ø160 L=700 mm	FITT AGIX FLAT 60 and PANEL60
VMA60-FLATPRE	Polystyrene arrangement (light blue color)	FITT AGIX FLAT 60 and PANEL60
VMA60-FLATSIL	Silencer for pipe 160 made of PET-coated polyester fiber.	FITT AGIX FLAT 60 and PANEL60
VMKSA60-FLAT2	Jamb installation kit (lowered type)	FITT AGIX FLAT 60 and PANEL60
VMA60FILTERS	Kit no. 4 honeycomb filters	FITT AGIX FLAT 60 and PANEL60
VMGRESIR160	Foldable outdoor grille quick installation from inside	FITT AGIX FLAT 60 and PANEL60
VMGAIR160A60	External grid with collar Ø160	FITT AGIX FLAT 60 and PANEL60
VMA60-FLATPRO5	5 cm wall extension for outdoor grill	FITT AGIX FLAT 60 and PANEL60
VMA60-FLAT-PRO1	10 cm wall extension for outdoor grill	FITT AGIX FLAT 60 and PANEL60
VMA36-FLAT-DP	MASTER Remote Panel	FITT AGIX FLAT 30/60 - DUO
VMA36-FLAT-DPCO	MASTER remote panel + CO ₂ sensor	FITT AGIX FLAT 30/60 - DUO
VMA36-FLAT-WP	MASTER Remote Panel	FITT AGIX FLAT - WIRELESS / PANEL--W
VMA36-FLAT-WPCO	MASTER remote panel + CO ₂ sensor	FITT AGIX FLAT - WIRELESS / PANEL--W