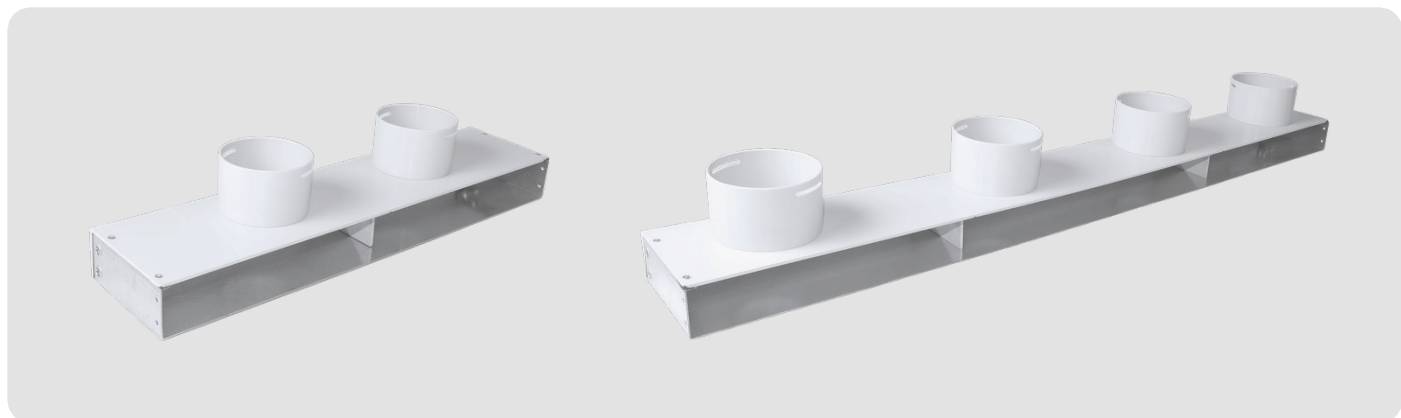


sheet and pvc adapters for ceiling or wall installation lengths 500 and 1000 mm

SHEET METAL AND PVC ADAPTERS FOR CEILING OR WALL INSTALLATION LENGTHS 500 AND 1000 MM



FEATURES

Adapters for connection with semi-rigid piping mod. VML-18-- :

- mod. **VMAD5075PS**, adapter size int. 495x47x110 mm with no. 2 Ø75 side-only attachments;
- mod. **VMAD5090PS**, adapter with internal dimensions 495x47x110 mm with no. 2 Ø90 side-only attachments;
- mod. **VMAD10075PS**, adapter with internal dimensions 990x47x110 mm with no. 4 Ø75 side-only connections;
- mod. **VMAD10090PS**, adapter with internal dimensions 990x47x110 mm with no. 4 Ø90 side-only attachments;

Materials of construction:

- 1 mm thick galvanized steel sheet for the "base" of the adapter and PVC thick. 3 mm for the adapter "plate" which is not, however, reversible;
- PP(polypropylene) for "GREY" Ø75 and Ø90 threaded collars.

Wall or ceiling brackets:

Supplied are two L-shaped fixing brackets made of 1.2mm-thick galvanized sheet metal equipped with two 55mm-long Ø7mm holes (slots), so that the depth of the adapter can be adjusted with respect to the wall/ceiling; there are, in addition, No. 4 M6x12 bolts to fasten the brackets on the adapter. Screws and dowels for fixing the brackets on wall/ceiling/ceiling are not provided.

Accessories (optional):

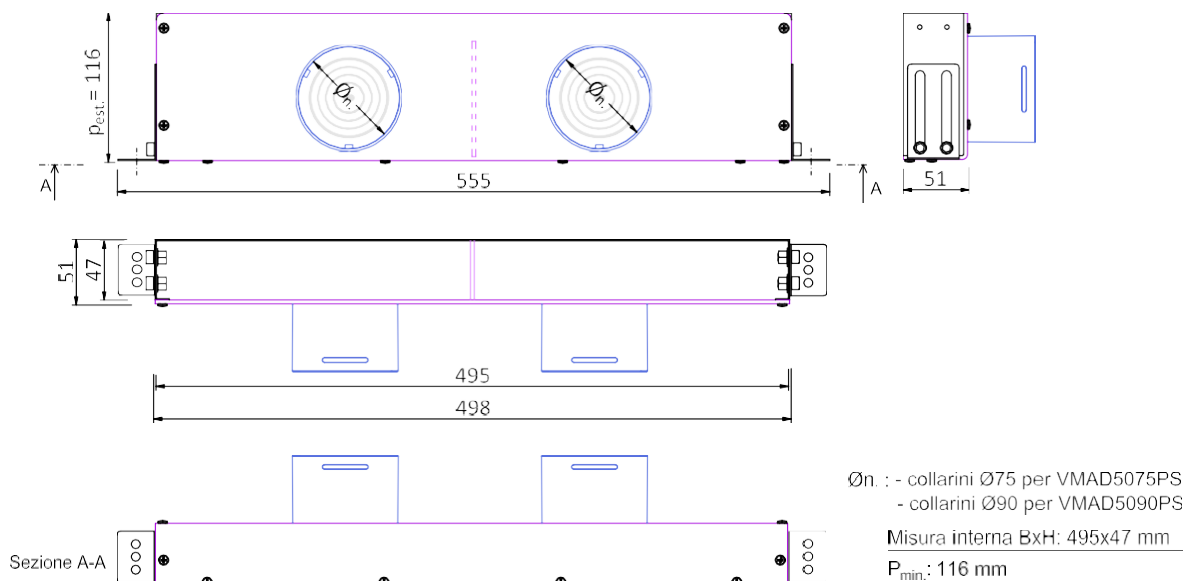
Galvanized sheet metal extensions with useful depth P=30 mm. Adapter insulation kit, PE foam thick. 3 mm.

Notes:

- Adapters for exclusive floor installation are different from adapters for wall/ceiling installation, having different brackets; they are not marketed separately but associated with stainless steel grids for floor installation. See article codes: VMGPS500X55275I, VMGPS100X55475I, VMGPS500X55290I, VMGPS100X55490I;
- The (loose) adapters are particularly suitable for linear diffusers, FLAT flat panel speakers of normal type, and perforated diffusers/grids of nominal lengths 500 and 1000 mm. They are equipped with two "springs" on the inside of the sides, which are used to engage the linear diffusers. For other types of diffusers/grids, springs are not necessary and can be removed on site.
- Adapters for the 500- and 1000-wall FLAT type diffusers are packaged in a single kit including the diffuser itself (see separate data sheet).

DIMENSIONAL: ADAPTERS DIM. NOM. 500X55 MM WITH NO.2 SIDE ATTACHMENTS Ø75 OR Ø90

Material: zn sheet metal. 1 mm thick with 3 mm thick PVC L-plate



DIMENSIONAL: ADAPTERS DIM. NOM. 1000X55 MM WITH NO.4 SIDE ATTACHMENTS Ø75 OR Ø90

Material: zn sheet metal. 1 mm thick with 3 mm thick PVC L-plate

