



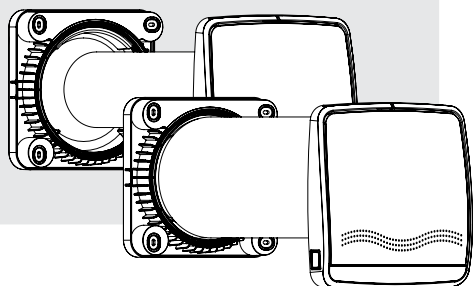
fitt agix®

Designing wellness

FITT Agix Flat 30 APP
FITT Agix Flat 60 APP

**Installation, use and
maintenance manual**

For decentralised ventilation
units with heat recovery and
alternating airflow.



fitt agix®

GENERAL INDEX

| | |
|---------------------------------|----|
| 1. INTRODUCTION | |
| a. GENERAL WARNINGS _____ | 4 |
| b. INTENDED USE _____ | 6 |
| c. PRODUCT OVERVIEW _____ | 7 |
| d. TECHNICAL DATA. _____ | 8 |
| 2. INSTALLATION | |
| a. INTRODUCTION _____ | 9 |
| b. PREDISPOSITION _____ | 9 |
| c. PRODUCT ASSEMBLY _____ | 11 |
| d. COVER POSITIONING _____ | 14 |
| e. ELECTRICAL CONNECTIONS _____ | 15 |
| f. CONFIGURATION _____ | 15 |
| g. RESET _____ | 16 |
| 3. INSTRUCTIONS FOR USE | |
| a. APP _____ | 16 |
| 4. MAINTENANCE | |
| a. INDICATIONS PERIOD _____ | 17 |
| b. HOW TO PERFORM. _____ | 17 |
| 5. FAQ _____ | 20 |
| 6. NOTES _____ | 2 |

INTRODUCTION - GENERAL WARNINGS

This product is manufactured in a workmanlike manner, in accordance with the applicable EC directives, and its intended use is to carry out air exchange in the rooms, compartments or the like in which it is installed. Follow all these directions to ensure its durability, electrical and mechanical reliability, so always keep this booklet. Do not use this product for a function other than that set forth in this booklet.

1. After removing the packaging, ensure the integrity of the device. Packaging items (plastic bags, expanded polystyrene, nails, etc.) should not be left within the reach of children as they are potential sources of danger.
2. Before connecting the appliance make sure that the nameplate data correspond to those of the electrical distribution network, install the product so that the blades are at least 2.3m above the floor.
3. This appliance shall be intended only for the use for which it is expressly designed. The manufacturer cannot be held responsible for any damage resulting from improper, erroneous and unreasonable use.
4. Do not use the product in the presence of corrosive or explosive vapors.
5. Before carrying out any cleaning or maintenance operations, disconnect the appliance from the power supply. Maintenance and cleaning operations on the product that require its disassembly should only be carried out by qualified personnel.
6. Make sure the product is fully assembled before putting it into operation.
7. Periodically, at least 1 time per year or more

frequently for heavy use, remove dirt and fouling from the fan, motor casing and grilles, it is also, important to check that the fan has no deformations or cracks, that it turns freely, without oscillations and that it is well attached to the motor shaft. Failure to do so may compromise the safety of the unit and the user.

8. When the device is decommissioned, it is recommended to make it inoperative by removing the power cord. It is also recommended that potentially dangerous parts be made harmless, especially for children who might use them for their own games.
9. Installation must be carried out according to the manufacturer's instructions by professionally qualified personnel. Incorrect installation may cause damage to people, animals or property for which the manufacturer cannot be held responsible.
10. As the appliance is for fixed installation, connection to the mains must be made by flexible cable with an omnipolar plug or switch having a contact opening distance of not less than 3 mm.
11. It is essential to ensure the necessary reentry of air into the room to ensure the operation of the product. Where there is a solid, liquid, or gas fuel-using appliance in the same room (e.g. water heater, stove, boiler, etc.), not the "watertight" type, make sure that the air return also ensures the perfect combustion of such an appliance. Intake air must not be fed into ducts used for exhausting hot air; example: combustion exhaust of gas water heaters. The appliance must discharge into single exhalation flue or directly to the outside.
12. The appliance may be used by children not less than 8 years of age and by persons with reduced physical, sensory or mental capabilities, or lacking the necessary experience or knowledge, provided that they are supervised or after they have received instructions

concerning the safe use of the equipment and understanding of the dangers inherent in it. Children should not play with the appliance. Cleaning and maintenance intended to be carried out by the user must not be done by children without supervision.

INTRODUCTION - INTENDED USE

The product is professionally constructed and installed to give the possibility of constant air exchange within the room. The recuperator can be installed in homes and general domestic and public places.

The product is equipped with a ceramic-type heat exchanger that stores heat during the extraction of air from the room, while during the intake of air from outside, the unit gives up the heat stored in the exchanger to the incoming cold air.

The product must be installed on the wall. The duct inside which the ceramic exchanger is placed is provided for walls from a maximum thickness of 500mm; the duct can be shortened to a minimum of 250mm.

The air extracted or injected from the product must not contain flammable or explosive mixtures, chemical vapors, dusts, oils and other pathogenic substances in general.

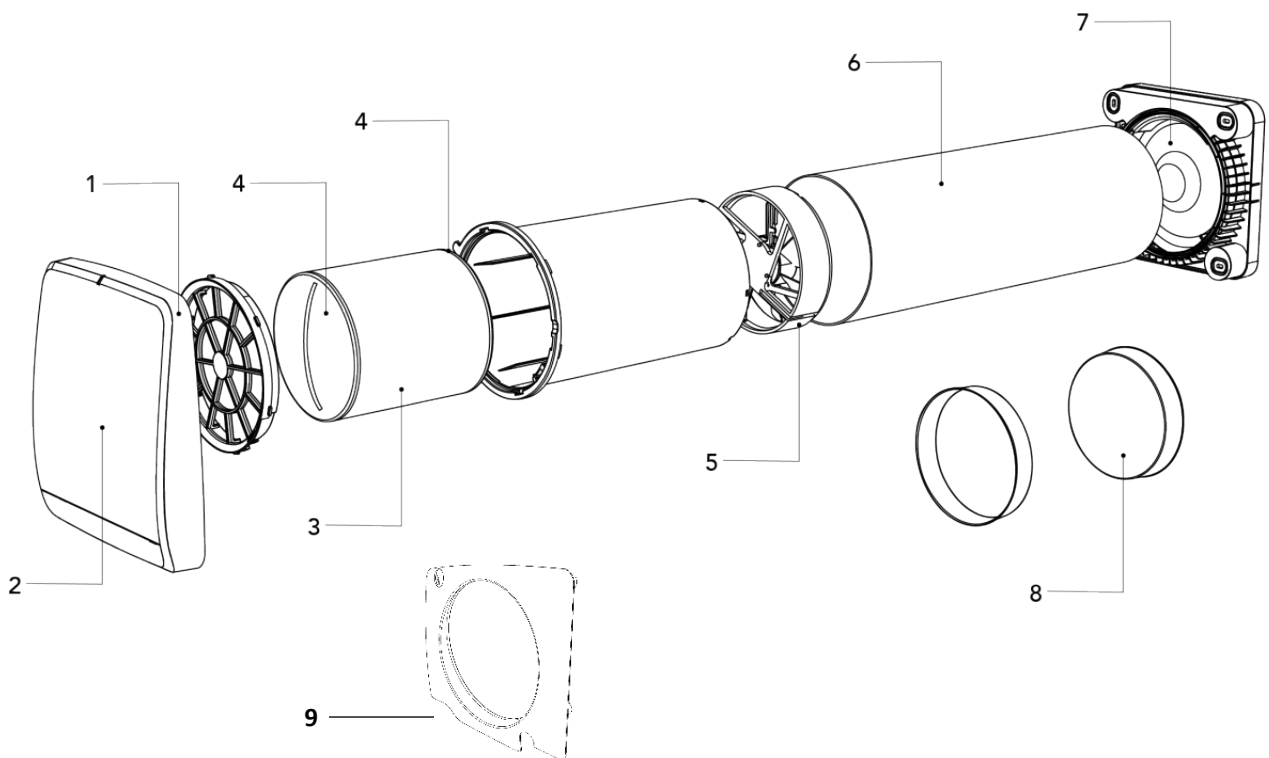
INTRODUCTION - PRODUCT OVERVIEW

The product consists of a main unit with a shut-off damper that will be placed inside the room, a recessed duct containing the ceramic exchanger and filters, and an external sound-absorbing grille.

A60-FLAT-APP

- 1- Main unit
- 2- Overhead damper
- 3- Ceramic exchanger
- 4- Filters

- 5- Motor-fan
- 6- Recessed pipe 500mm
- 7- External grille
- 8- Caps for recessed pipe
- 9- Cover



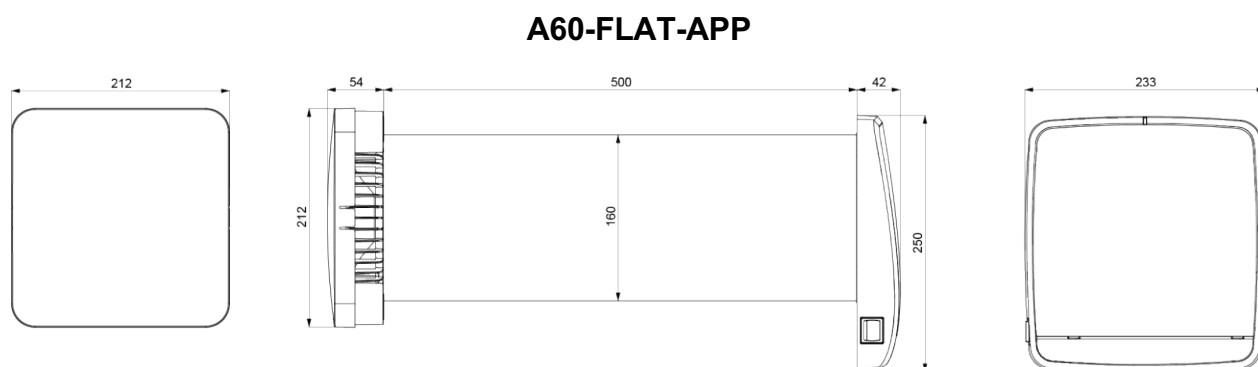
INTRODUCTION - TECHNICAL DATA

The recuperator is classified as a class II product with an IPX4 degree of protection.

The recuperator is designed for indoor installations with operating temperatures between -30°C and +50°.

The design of the recuperator is constantly changing, therefore, some models may differ from what is described in this manual.

DIMENSIONS (mm)



TECHNICAL FEATURES

| A60-FLAT-APP | | | | |
|-------------------------------|---------|-----|-----|-----|
| Voltage at 50Hz [V] | 220-240 | | | |
| Max efficiency | 93% | | | |
| Speed | Night | 1 | 2 | 3 |
| Flow rate [m ³ /h] | 10 | 20 | 40 | 60 |
| Power [W] | 3,9 | 4,2 | 5,5 | 6,7 |
| Noise dB(A)3m | 4 | 9 | 21 | 30 |

INSTALLATION - INTRODUCTION

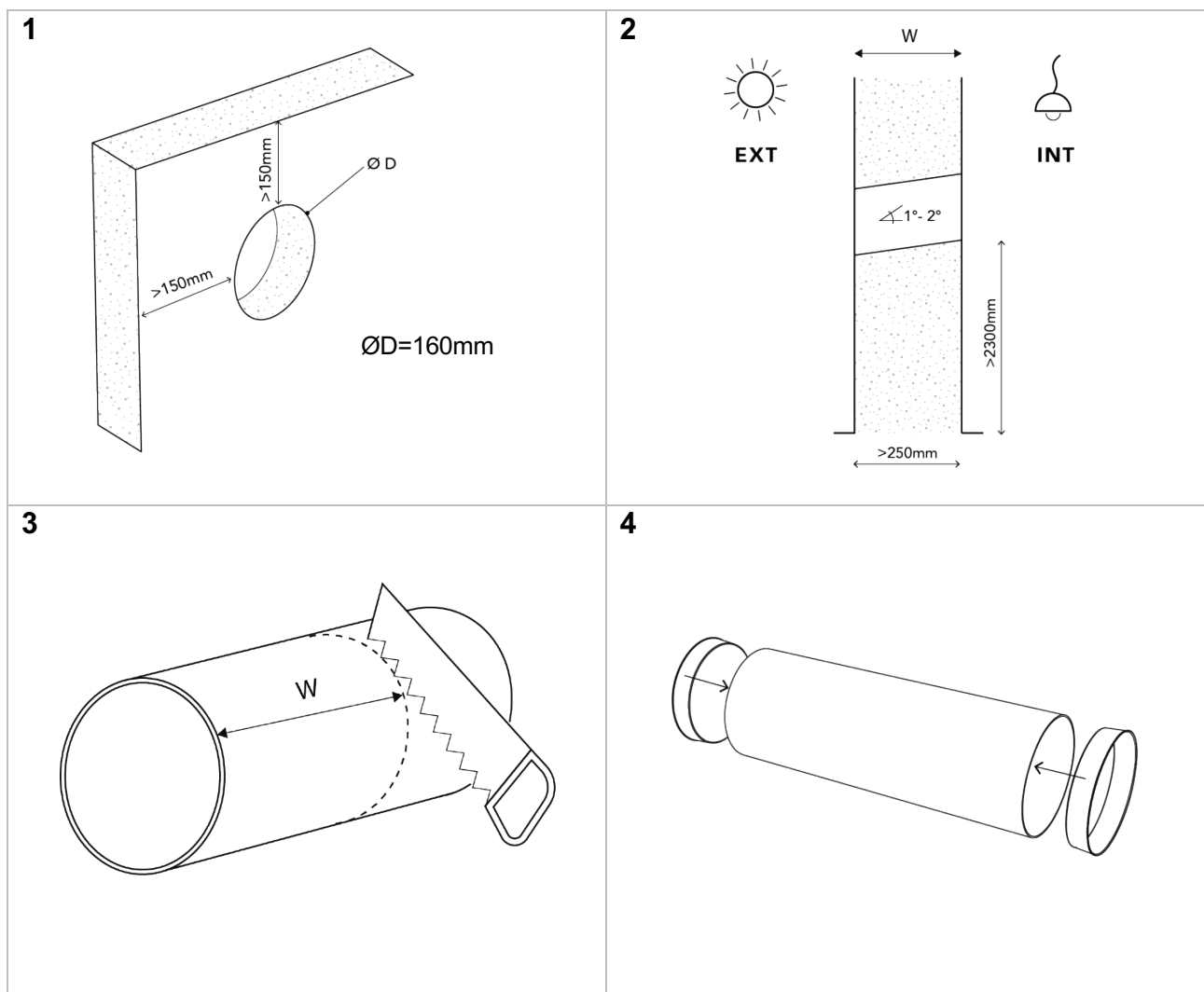
Installation of the appliance is intended only and exclusively for qualified personnel. Ensure that the mains connection in the installation room is disconnected before electrical installation operations.

The appliance should not be installed near curtains, drapes, etc. as these may impair its proper operation.

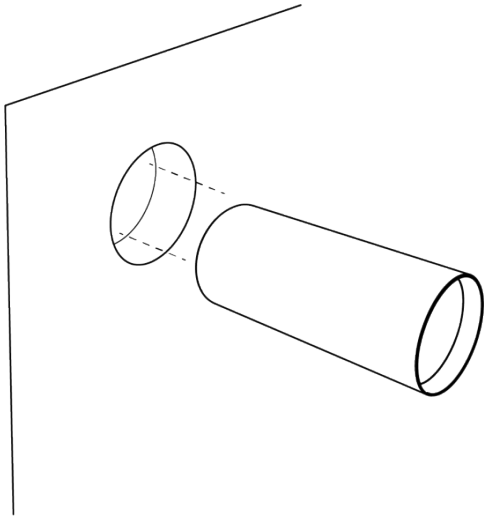
Ensure that when installed, the fan blades are placed no less than 2.30m away from the floor below the product. When installing multiple appliances, the distance between each product should be at least 3m.

Before installing the product, carefully read and strictly follow the instruction manual and make sure you have all the materials needed for installation.

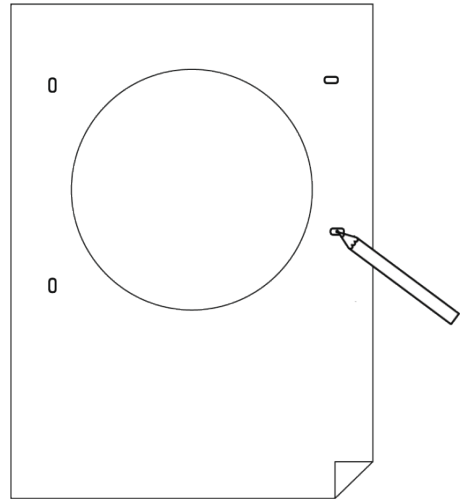
INSTALLATION - PREPARATION



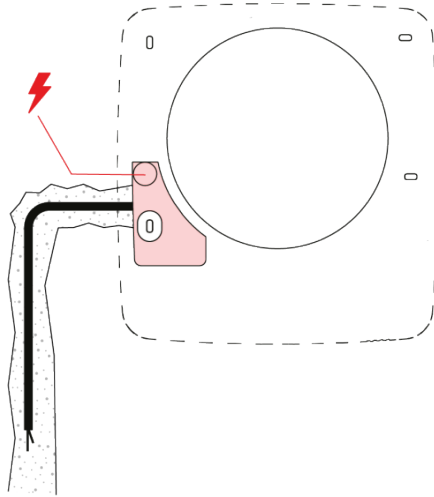
5



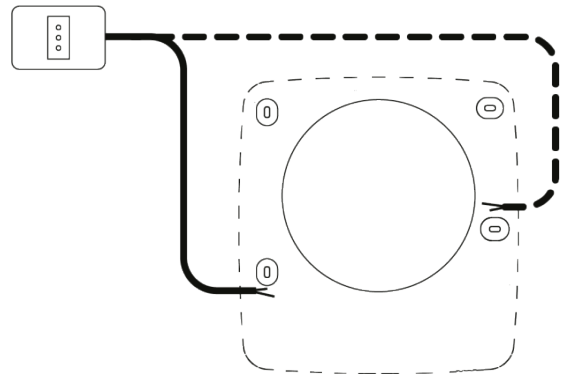
6



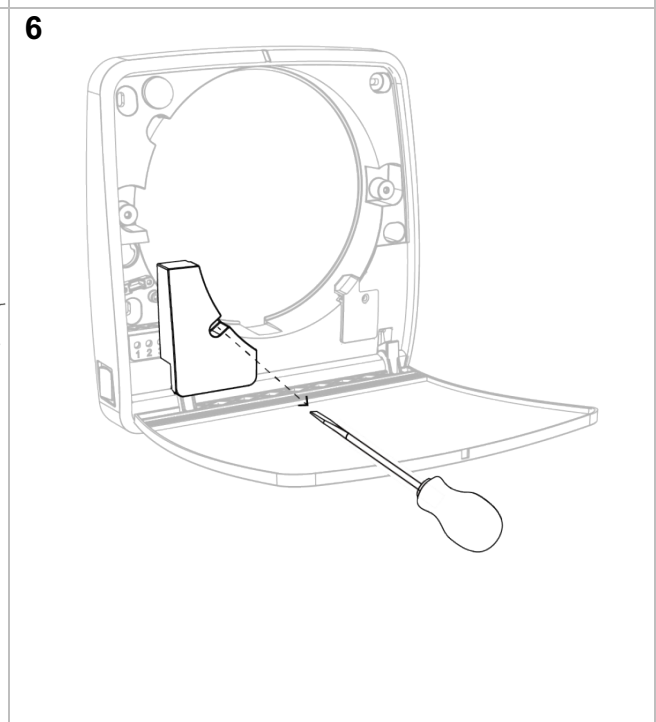
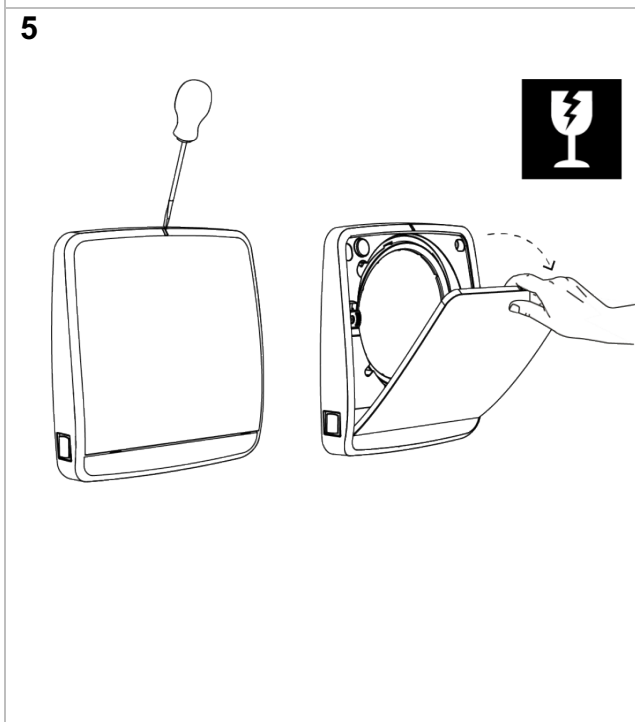
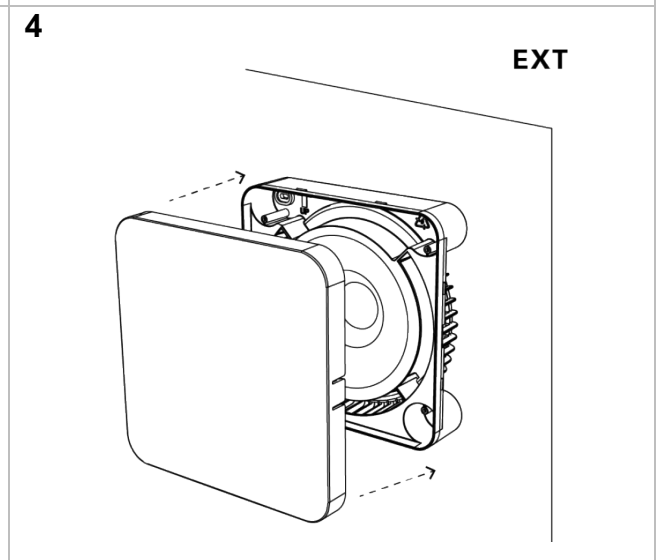
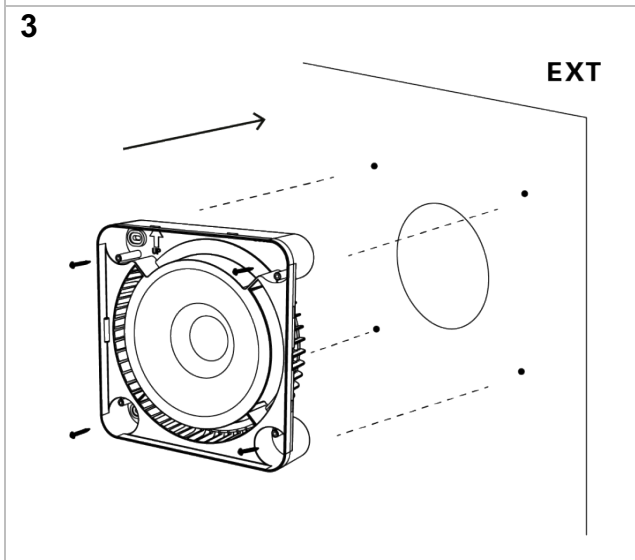
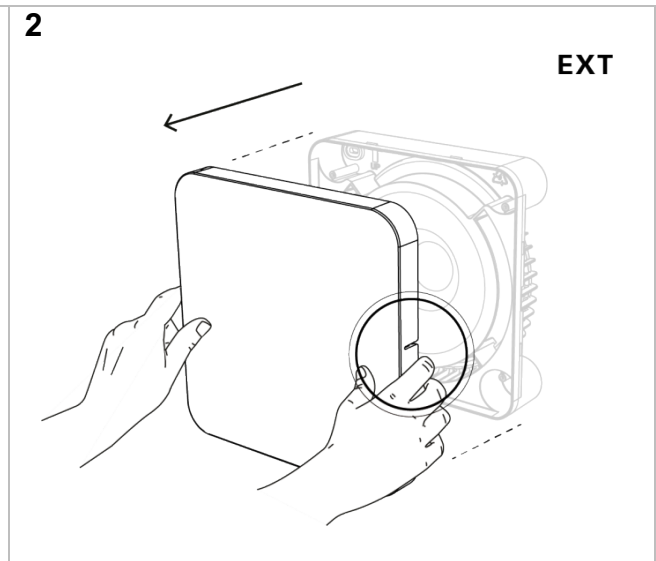
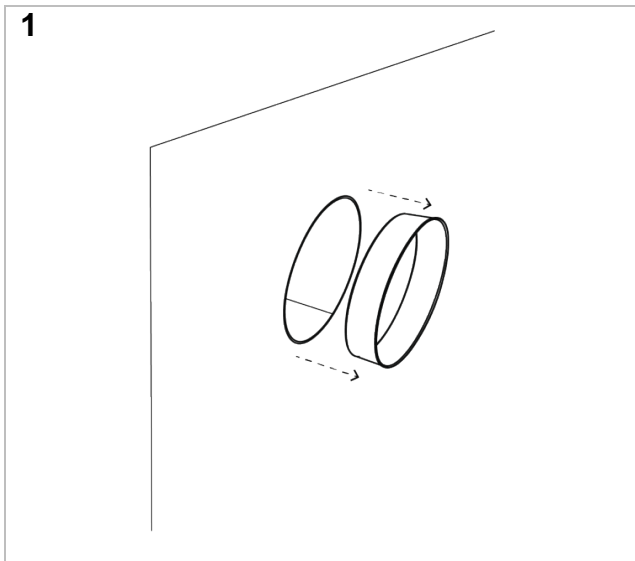
7 A



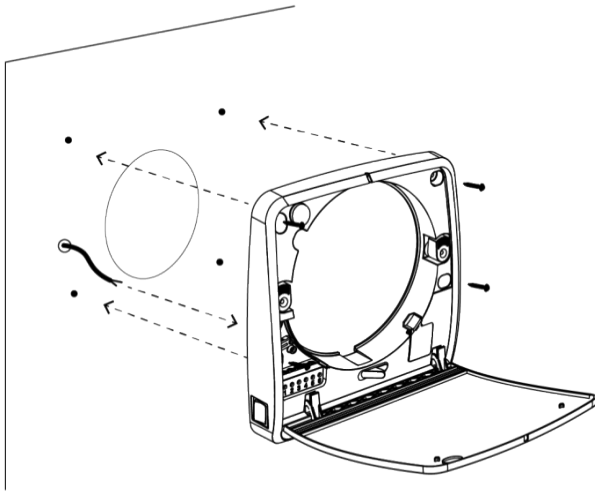
7 B



INSTALLATION - PRODUCT ASSEMBLY

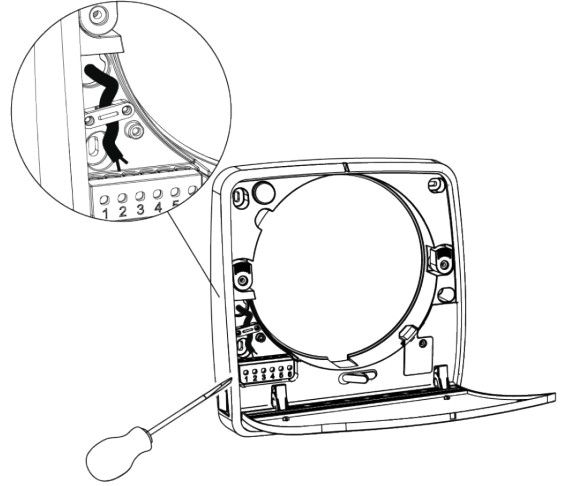


7

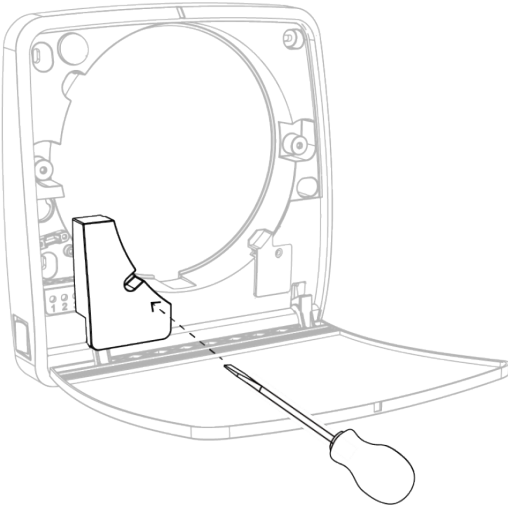


8

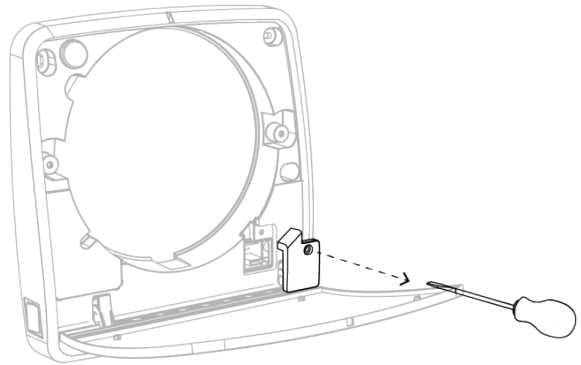
See section
"ELECTRICAL
CONNECTIONS."



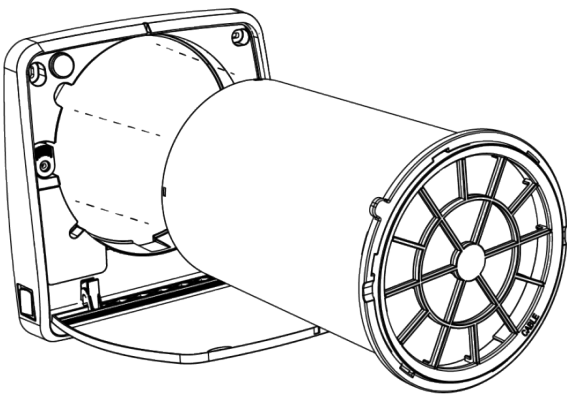
9



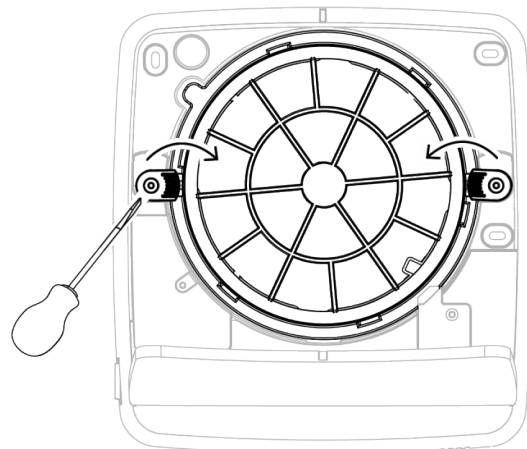
10



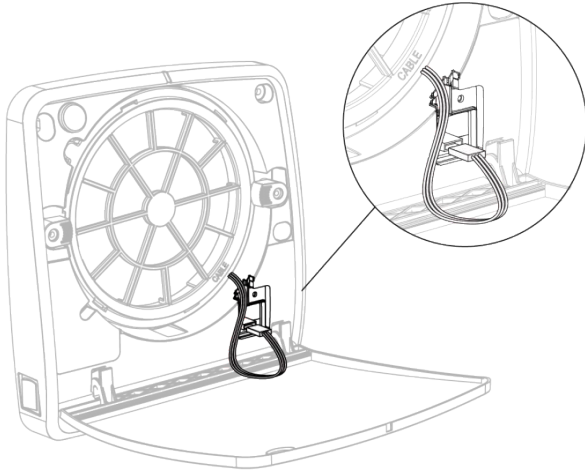
11 A



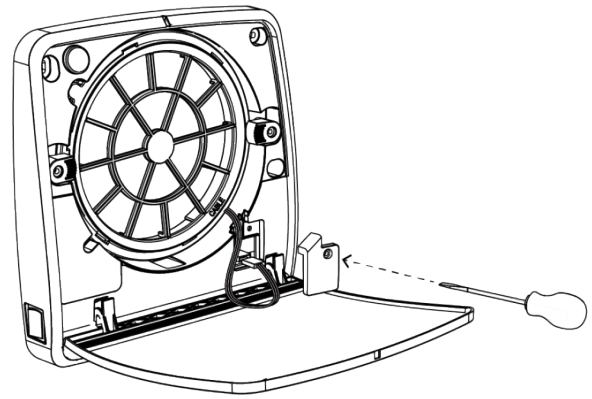
11 B



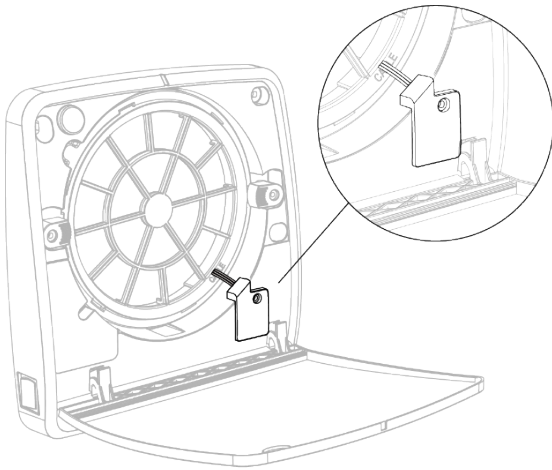
12 A



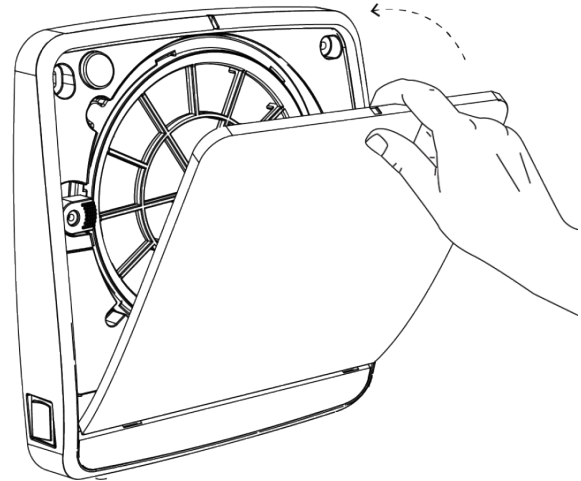
12 B



13



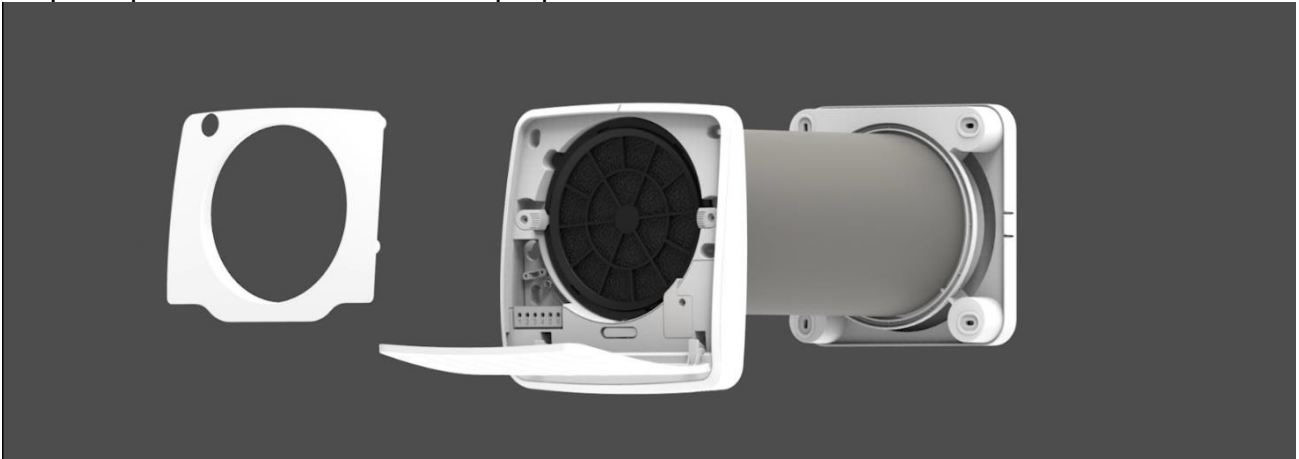
14



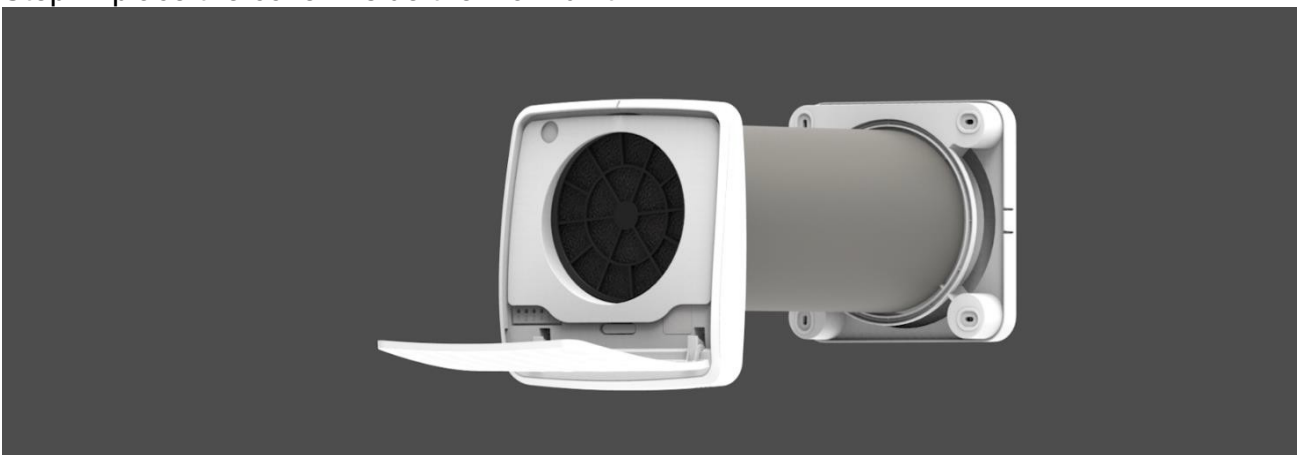
INSTALLATION - COVER PLACEMENT

After the previous steps are completed, you should position the finishing cover as shown in the steps below:

Step 1: open the fan unit door and prepare the cover



Step 2: place the cover inside the main unit

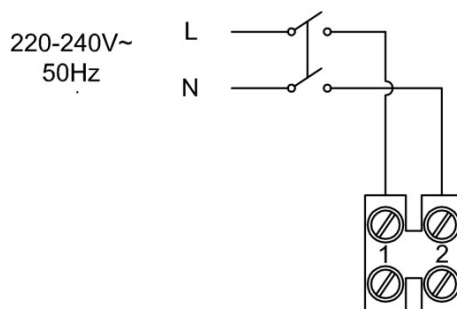


Step 3: close the door



INSTALLATION - ELECTRICAL CONNECTIONS

Please note: during this step, all products must have the main switch set to "0".



INSTALLATION - CONFIGURATION

download the app from the stores

Download the App from the stores and install it on your smartphone.
(for iOS® devices from App Store, for Android® devices from Play Store)

REGISTRATION AND ACCOUNT CREATION

After opening the App follow the instructions to register. If you are already registered, use your credentials to log in.

HOME CREATION AND DEVICE ASSOCIATION

Proceed with the configuration of the installed devices by following the procedure indicated by the App:

1. creation of your home
2. searching for installed devices and associating them with your home internet network
3. system configuration

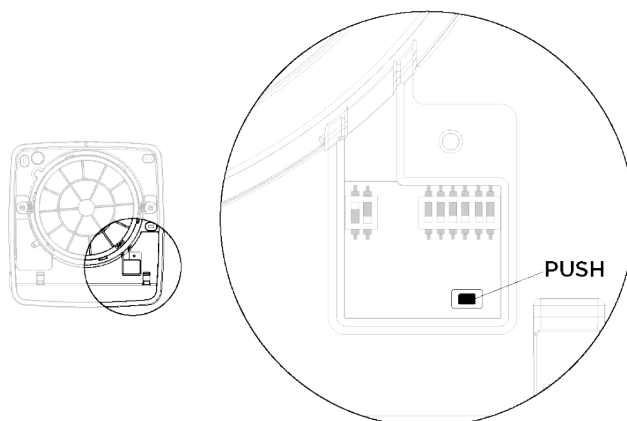
For details, refer to the App's configuration and use manual, which can be accessed directly from the App on the "*Settings/Product Instruction Manual*" page or downloaded at www.airplast.it.

CAUTION: The response time of the devices varies depending on the speed of the home connection available.

INSTALLATION - CONFIGURATION RESET

In case of device configuration errors, it is possible to perform a factory reset that returns the devices to their initial settings.

To perform the reset, you must press the physical button shown in the following image for 15 seconds, releasing it only after the unit beeps twice:



At this point it is necessary to turn off the unit via the main switch and turn it on again.

OPERATING INSTRUCTIONS

Refer to the App's configuration and operation manual, which can be accessed directly from the App on the "*Settings/Product Instruction Manual*" page or downloaded at www.airplast.it.

MAINTENANCE - PERIOD DIRECTIONS

Every 3000 hours of operation, the indicator light on the MASTER fan unit will flash to remind you to do product maintenance. At the same time, the FILTER STATUS indicator on the App will turn red, signaling the need to perform routine maintenance.

At this point the products will continue to work in the function already set without the possibility of changing it until maintenance is performed.

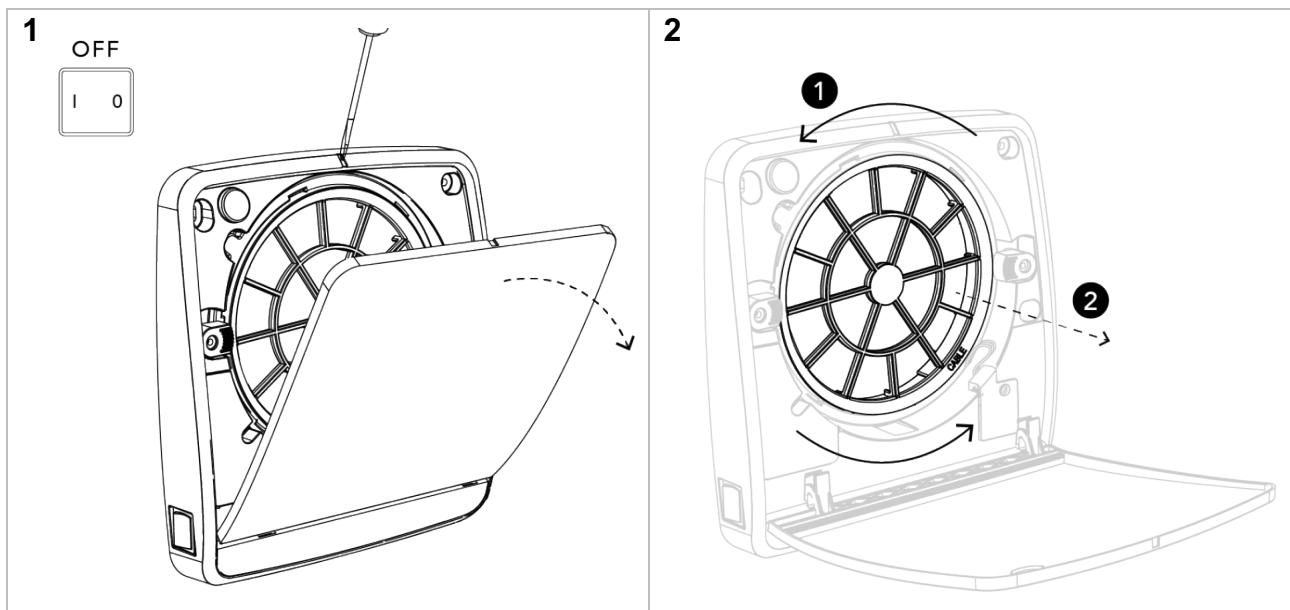
Once maintenance has been performed to reset the alarm you will need to press the RESET button located next to the FILTER STATUS indication on the App.
It is recommended that filters be changed when wear and tear on them compromises air passage or their effectiveness has failed, or at most within 2 years.
Contact your dealer for a replacement filter kit.

For details, refer to the App's setup and use manual, which can be accessed directly from the App on the "*Settings/Product Instruction Manual*" page or downloaded at www.airplast.it

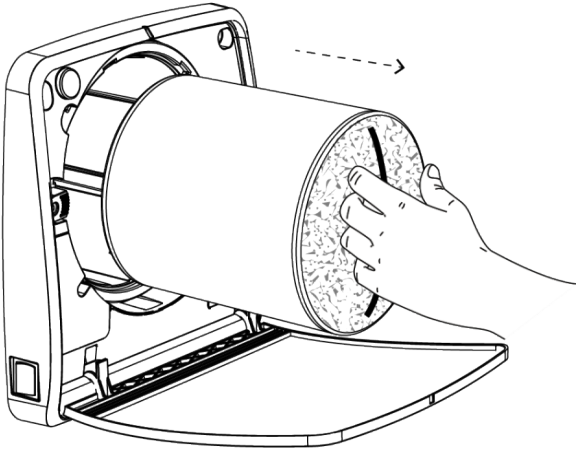
MAINTENANCE - HOW TO PERFORM IT

All maintenance work on the device is intended only and exclusively for qualified personnel.
Ensure that the network connection in the installation room is disconnected before performing maintenance operations.

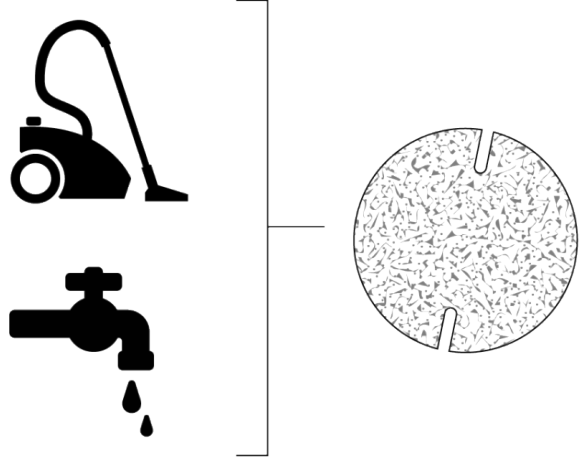
A60-FLAT-APP



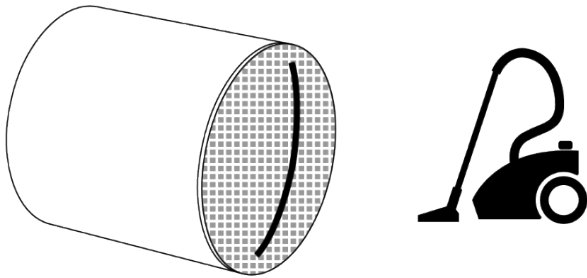
3



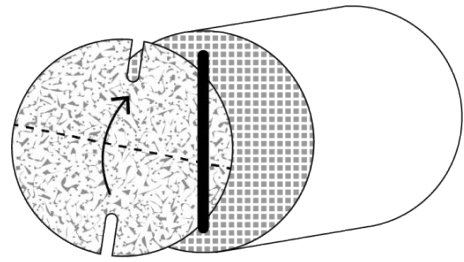
4



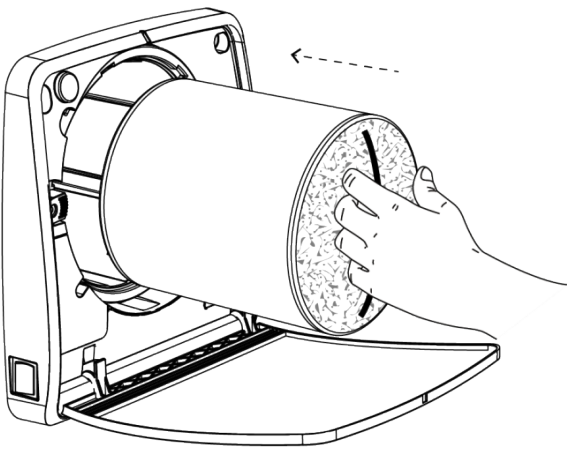
5



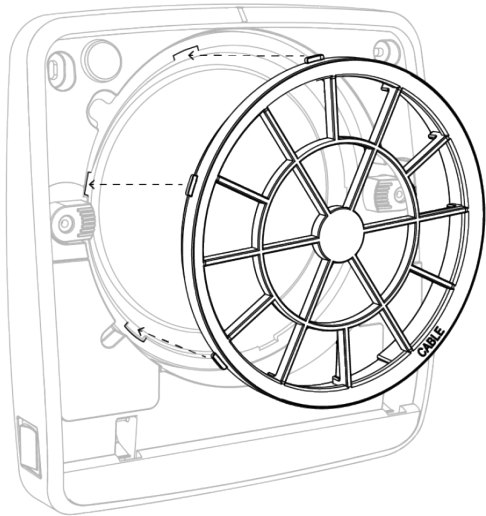
6

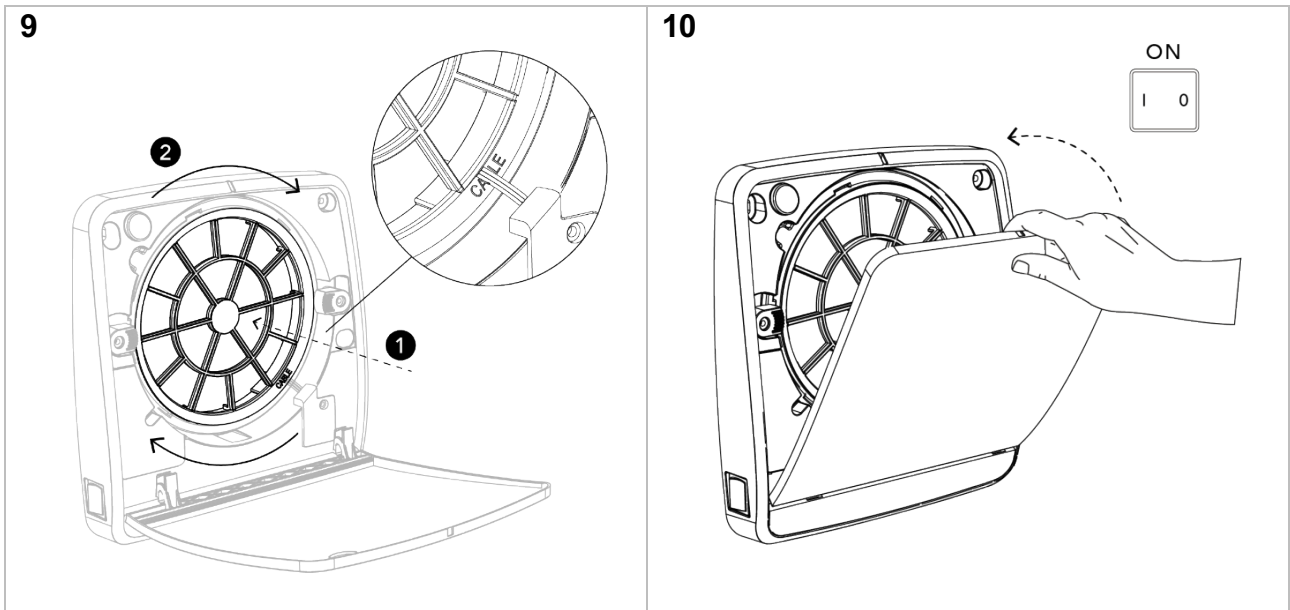


7



8





CAUTION: After performing maintenance and turning the product back on, it is necessary to wait a few minutes for the product to reconnect to the Internet network and for the connection with the data server to be restored. The waiting time varies depending on the speed of the home connection available.

FAQ

| | |
|---|--|
| The product does not turn on | Make sure the product is connected to the power supply correctly. Verify that the ON/OFF (I/O) switch is in the ON (I) position. |
| The product is not configured | Verify that the wi-fi password entered is correct. |
| APP does not detect all products being configured | The initial setup phase takes advantage of Bluetooth, so you have to be in close proximity to the various products to detect them correctly. |

WARNING: In case the problem encountered is different from those listed or in case it is not solved by following the above steps, contact an authorized service center.

agix.fitt.com

VERS. 09/2024

FITT VENTILATION SOLUTIONS

This is the business area of the FITT Group that develops professional solutions, manufacturing complete HRV (Heat Recovery Ventilation) and air distribution systems for the air quality of residential environments, for energy saving and the comfort of people.

For more information:

AIRPLAST S.r.l. a sole shareholder company

Head Office: Via Piave, 8 – 36066 Sandrigo (VI), Italy

Warehouse - Production: Via Aldo Moro, 10 – 36060 Pianezze (VI), Italy

Tel: +39 0424 1754519 | airplast.it

Airplast S.r.l. is a company of the FITT Group

Manufactured by O.ERRE S.r.l., Via del Commercio – 25039 Travagliato (BS), Italy