

ventilation solutions

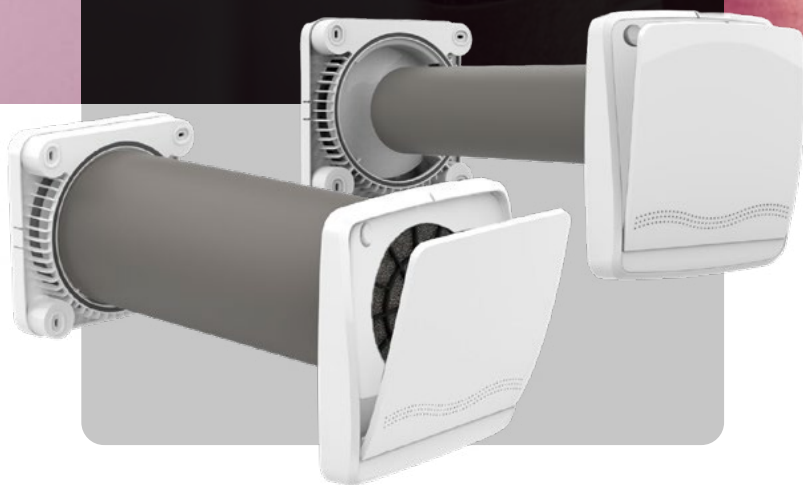
FITT Agix Flat 30 APP
FITT Agix Flat 60 APP

Delocalized ventilation units
with alternating-flow heat recovery

NEW

Simplified management through the new
App:

agix point

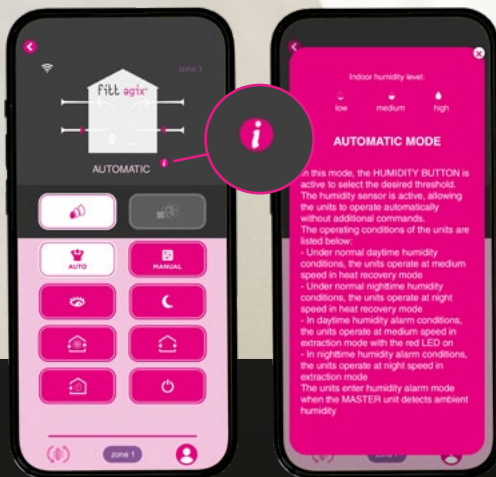


fitt agix®

agix point

App-enabled models of the FITT Agix Flat 30 and FITT Agix Flat 60 delocalized ventilation units can now be controlled via the new AgixPoint App, which enables simplified control of the unit wherever you are, via smartphone.

The new AgixPoint App is designed to offer essential and immediate management of the unit, increasing ease of use and providing a more intuitive user experience.



Instant control.
Quick setup.
Intuitive operation.

- Guided setup in a few steps
- All functions in a single dashboard
- Help and usage tips integrated in the App
- Local management without Wi-Fi (via Bluetooth)
- Master-Slave configuration between units
- Immediate identification of zones

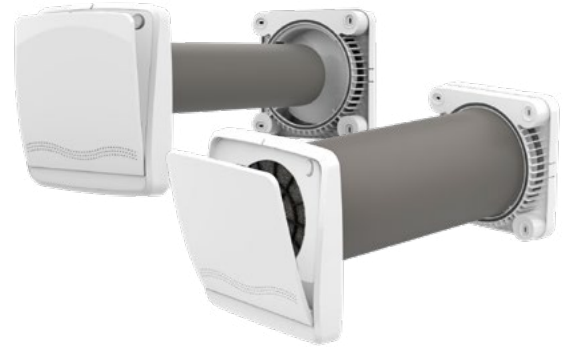


FITT Agix Flat 30 and FITT Agix Flat 60 App-enabled models

Decentralized HRV units redesigned for single-room ventilation with heat recovery, without ductwork, with airflow capacity of 30 or 60 m³/h.

Quiet and compact, they find excellent integration in both living and sleeping area rooms.

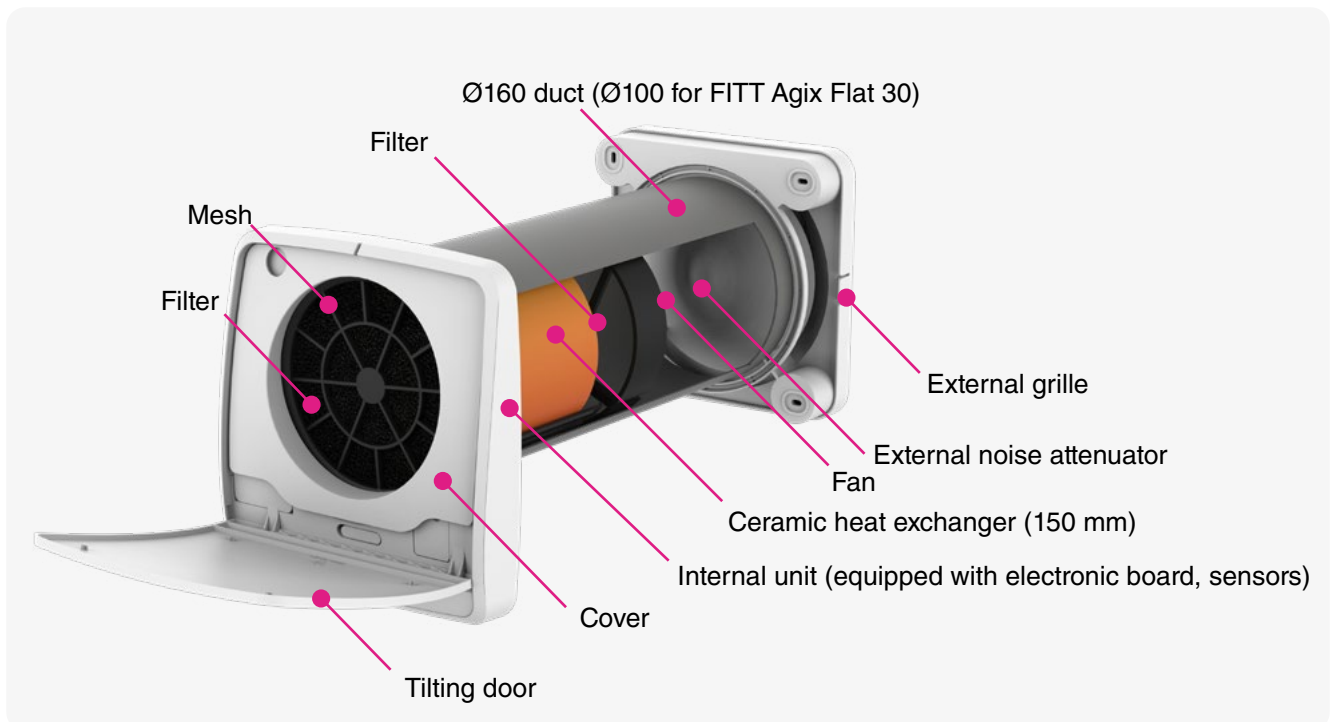
The App-enabled models of FITT Agix Flat 30 and FITT Agix Flat 60 enable convenient management of the unit **via smartphone**. With the **new AgixPoint App**, unit control is even simpler, more practical and intuitive.



Consumption	Noise	Max efficiency	Stop
from 3.9 W	from 4 dB(A)	93%	mould and bacteria

- **Sleek design** of the internal unit (**only 4 cm deep**);
- Ceramic heat exchanger (150 mm);
- Fan positioned after the heat exchanger for even **quieter operation**;
- External grille designed to **reduce noise from outside**;

- Led and acoustic warning for signaling command acquisition;
- Simplified Master-Slave programming;
- Ease of assembly;
- **Easy maintenance** without disassembling the indoor unit.



FITT Agix Flat 30 and FITT Agix Flat 60

App-enabled models



Find out more!

Model		FITT AGIX FLAT 30 APP	FITT AGIX FLAT 60 APP
Ventilation capacity [m ³ /h]		30	60
Power consumption (at max speed) [W]		6,9	6,7
Power supply		220-240V (50 Hz)	220-240V (50 Hz)
PVC duct	Ø [mm]	100	160
	Length	500 (can be cut on site up to 250 mm)	500 (can be cut on site up to 250 mm)
Exchanger type and operation		Ceramic With alternating flows of 70 seconds	Ceramic With alternating flows of 70 seconds
Master-slave connection		App	App
Control		Smartphone	Smartphone
Night mode and boost mode for extraction		✓	✓
Signaling operation and maintenance of the device		✓	✓
Built-in twilight and humidity sensor (LOW - MEDIUM - HIGH)		✓	✓
Speed levels		night + 3 speeds	night + 3 speeds
Weight [kg]		4,3	4,3
Factory filters		G3	G3
Protection rating		IPX4	IPX4
Internal unit: H (Height) x W (Width) x D (Depth) [mm]		250 x 233 x 42	250 x 233 x 42
Noise level at speed 1 (20 m ³ /h) at 3 m in free field		18 [dB]	9 [dB]
Noise level at speed 3 (60 m ³ /h) at 3 m in free field		37 [dB]	30 [dB]

Compact size, high performance and maximum control

The App-enabled models of FITT Agix Flat 30 and FITT Agix Flat 60 are designed to offer direct and effective control over indoor air quality, thanks to agile and simplified management of the unit via the new AgixPoint App. Added to this is an elegant appearance, with minimal space requirements and excellent acoustic properties.



Accessories compatible with FITT Agix Flat 60

Lowered frame kit

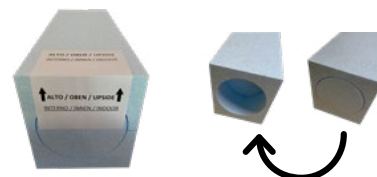
Installation kit for the heat recovery units, with the external part exiting on a window frame instead of directly on the external wall.

- Minimal aesthetic impact and reduced external wall protrusion;
- Reduced noise from outside;
- External grille accessible even without a terrace;
- Easy and permanent fixing of plaster (or other finishing materials) on the outer surface of the kit;
- Reduced wall encumbrance thanks to the rectangular duct thickness of only 6 cm;
- Flexible positioning of the heat recovery unit from 15 to 56 cm from the frame, thanks to the easily cuttable rectangular duct;
- 3 mm expanded PE insulating layer applied to the rectangular duct.



Polystyrene through-wall preparation

Recessed template that facilitates proper wall installation of the unit, ensuring correct alignment and suitable slope for natural condensate drainage.



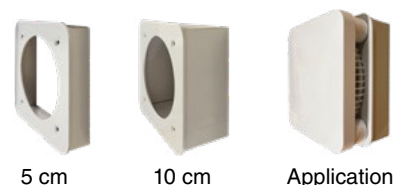
Ø160 Silencer

It reduces the transmission of external noise through the duct, improving indoor acoustic comfort (attenuation up to approx. 9 dB(A)).



Extensions for external grille

Allow installation of the unit on walls less than 25 cm thick, ensuring proper support of the outdoor grille.



Replacement filters*.

They ensure the maintenance of filtration standards and the functional integrity of the unit over time.



*Also available for FITT Agix Flat 30

airplast.com

VERS. 03/2026

FITT VENTILATION SOLUTIONS

It is the business area of FITT Group that develops professional solutions by producing complete VMC (Controlled Mechanical Ventilation) and air distribution systems to ensure the living comfort of residential environments, energy saving and people's well-being.

For more information:

AIRPLAST S.r.l. single-member company

Registered office: Via Piave, 8 - 36066 Sandrigo (VI), Italy

Headquarters: Via Aldo Moro, 10 - 36060 Pianezze (VI), Italy

Tel: +39 0424 1754519 | airplast.it

Airplast S.r.l. is a company of FITT Group